

SERVICE NOTES

SPECIFICATIONS

(Specifications subject to change without notice.)

All Dimensions in Inches	1054	854		753		702	
	953	704 654 604	34E 34R	653 633 603	33E 33R	552 502	32E 32R
Length Overall	69	60	54	61	54	61	54
Wheel Base	47	41 $\frac{1}{4}$	41 $\frac{1}{4}$	41 $\frac{1}{4}$	41 $\frac{1}{4}$	41 $\frac{1}{4}$	41 $\frac{1}{4}$
Width Overall	36 $\frac{1}{2}$	30	26 $\frac{3}{4}$	30	26 $\frac{3}{4}$	30	26 $\frac{3}{4}$
Width Overall W/Mower			33 $\frac{1}{2}$		33 $\frac{1}{2}$		33 $\frac{1}{2}$
Width At Front Wheels	33	31 $\frac{1}{4}$	27	*31 $\frac{1}{2}$	24 $\frac{3}{4}$	28 $\frac{1}{2}$	24 $\frac{3}{4}$
Height	42	37	32	36 $\frac{1}{2}$	33 $\frac{1}{2}$	36 $\frac{1}{2}$	33 $\frac{1}{2}$
Height To Top Of Hood	35	32	28 $\frac{3}{4}$	32	28 $\frac{3}{4}$	32	28 $\frac{3}{4}$
Net Weight (Approx.)	650	400	380	380	350	370	350
Crop Clearance	9 $\frac{1}{2}$	7 $\frac{1}{4}$	—	7 $\frac{1}{4}$	—	7 $\frac{1}{4}$	—
Frame Clearance	13 $\frac{1}{4}$	13 $\frac{1}{2}$	10 $\frac{3}{4}$	13 $\frac{1}{2}$	10 $\frac{3}{4}$	13 $\frac{1}{2}$	10 $\frac{3}{4}$
Engine Horse Power	10, 9.6	8, 7, 6	6	7, 6	6	7, 5 $\frac{1}{2}$	5 $\frac{1}{2}$
Fuel Capacity (Gal.)	2 $\frac{3}{4}$	1	1	1	1	1	1
Tires (Front) Size	4.00 x 8	4.00 x 8	3.50 x 4	4.00 x 8	3.50 x 4	4.00 x 8	3.50 x 4
Tires (Front) Pressure (P.S.I.)	20	20	15	20	20	20	—
Tires (Rear) Size	6.40 x 15	6.00 x 12	4.00 x 8	6.00 x 12	4.00 x 8	6.00 x 12	4.00 x 8
Tires (Rear) Pressure (P.S.I.)	6-8	6-8	6-8	6-8	6-8	6-8	6-8

*Model 603-28 $\frac{1}{2}$ "

All Engines 4 Cycle, Single Cylinder, Air Cooled

LUBRICATION

All models have pressure fittings at some or all of the following locations:

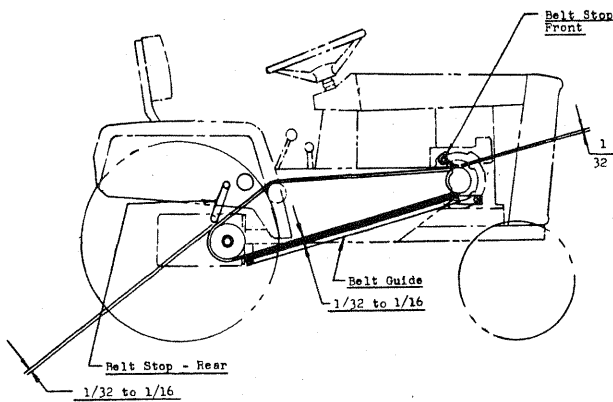
1. Steering Column top and bottom
2. Front wheel bearings
3. Front axle (center)
4. Front axle spindles
5. Steering gear sector
6. Steering Tie rod ends
7. Mower blade spindles (Lawn Ranger)
8. Clutch idler Pulley

Lubricate every 8 to 10 hours of operation. Use light oil on other moving parts at the same interval. Check transmission oil level after every 40 hours of operation. Remove oil filler plug at left rear side of the transmission and fill to level of hole with a good grade of S.A.E. 40 gear or engine oil. Drain and refill once each year.

SERVICE NOTES

GENERAL MAINTENANCE

1054 & 953 MODELS

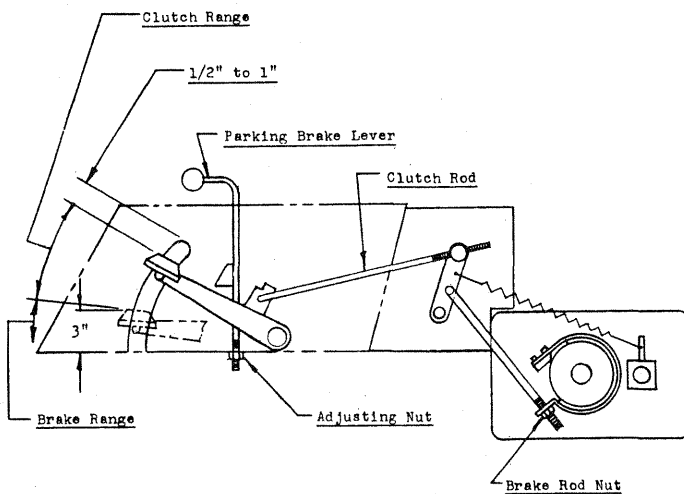


ADJUSTMENT OF BELT GUIDES: Belt guide part 4195 attaches to the frame and to the side of the engine and runs along the bottom side of drive belt. This guide should be adjusted so that there is $\frac{1}{32}$ " to $\frac{1}{16}$ " clearance between the belt and the guard.

Rear Belt Stop part 4486 fits inside the right rear fender and extends down to the top of the drive belt on transmission pulley. This belt stop should be adjusted so that it is $\frac{1}{32}$ " to $\frac{1}{16}$ " away from the top of the belt.

Front Belt Stop part 4796 fits on the engine and extends down to the belt on the engine pulley. It should be adjusted so that it is $\frac{1}{32}$ " away from the top of the belt.

BRAKE ADJUSTMENT: The brake band, located on the left side of the transmission, brakes the transmission and in turn stops the wheels. Adjust the nut on the brake rod so that, when you depress the clutch pedal all the way down, the band tightens around the brake drum just as the idler pulley releases the belt. Keep brake band and drum free from oil and dirt.



IMPORTANT: Adjustment of Clutch Brake Pedal.

1. Adjust Pedal to $\frac{1}{2}$ " to 1" position by adjusting Clutch Rod. 2. Depress Pedal to approximately the 3" dimension and swing Parking Brake Lever until it holds Pedal at the 3" position. 3. Tighten Brake Rod Nut until Brakes lock. 4. This procedure must be followed after 10-15 hours of operation on initial run-in of Tractor. This adjustment should be repeated if the Clutch Pedal approaches the top of the slot in the Belt Shield. Failure to adjust may result in failure of the main Drive Belt.

PARKING BRAKE ADJUSTMENT: After brake band and clutch-brake pedal have been adjusted, depress pedal until tractor brakes are locked. Pull parking brake lever back and adjust nut on bottom of lever shaft until lever will engage and hold pedal down.

HYDRAULIC BELT ADJUSTMENT: Proper belt tension is maintained by removing the right hand belt guard and loosening the four (4) bolts holding the pump body to the frame. Pump may now be moved forward and backward to adjust belt.

CARE OF THE TRACTOR

Keep tractor greased and oiled regularly. See previous instructions for location of grease fittings, Check transmission and engine case oil levels.

Keep engine air filter clean. Dirty filters use excessive fuel and reduces engine power and life.

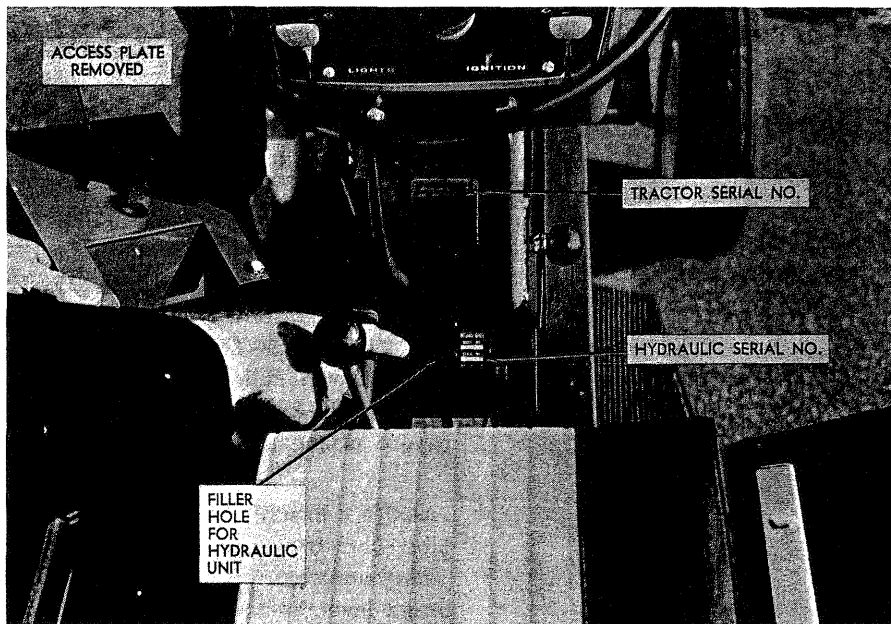
Keep tires properly inflated.

Keep tractor covered and in a dry place when not in use.

Check battery liquid after every 40 hours of use. If tractor has been in storage it may be necessary to recharge.

Your tractor is only as good as the service you give it. See your Wheel Horse dealer for a thorough check-up after each season of use.

When replacing belts it is advisable to purchase them from your Wheel Horse dealer, as these belts are specifically designed for each tractor or attachment. A new drive belt may have a tendency to squeak during clutching, this will stop after an hour or two of operation as the belt seats in the pulley.



HYDRAULIC UNIT

DESCRIPTION

The Hydraulic Unit system built into your tractor is designed to give you hydraulic power for your attachments with fingertip control. This unit is a completely self-contained hydraulic gear pump, directional control valve and oil reservoir; with a companion hydraulic cylinder and hoses connecting the power unit with the cylinder. The unit has a built-in safety valve to eliminate overloading of the hydraulic system and tractor attachments.

SERVICING PUMP

You must **ADD OIL** before starting engine to avoid damage to pump. Remove filler plug and fill to top of hole with fluid. **NOTE:** Filler plug is mounted off the vertical center line of the unit. This is to prevent over filling. An air space must be left in the top of tank, so no attempt should be made to completely fill reservoir. **USE ONLY WHEEL HORSE OIL** (Number 4822). Replace plug and tighten.

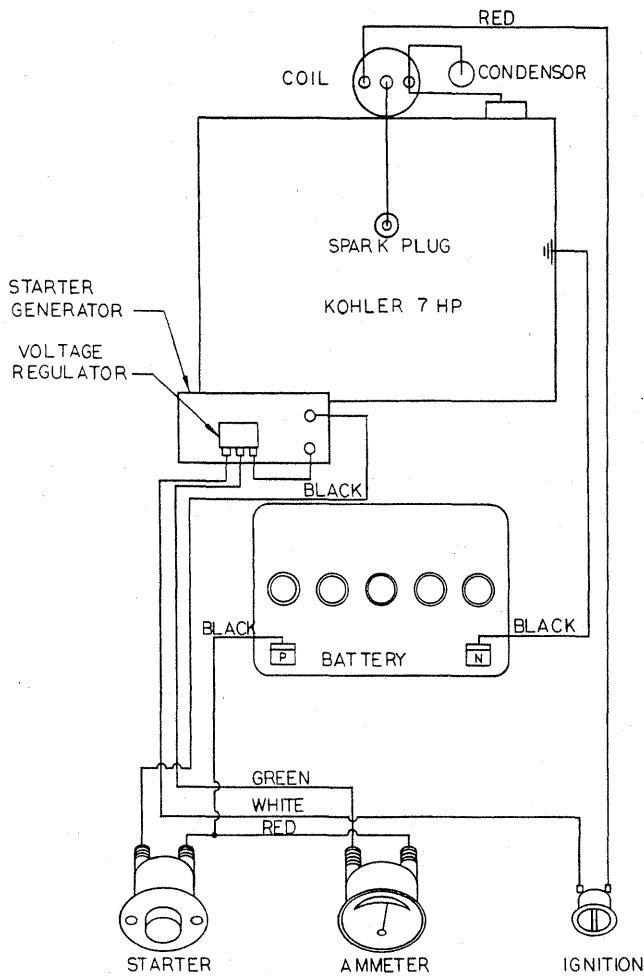
OPERATION

To raise tractor attachments, pull handle toward you, upon release of handle it will return to the center or neutral position. A slightly sluggish action of the control lever returning to neutral may exist during the break-in period. A few hours of running time will eliminate this. After running unit a short time, check all fittings for fluid leaks.

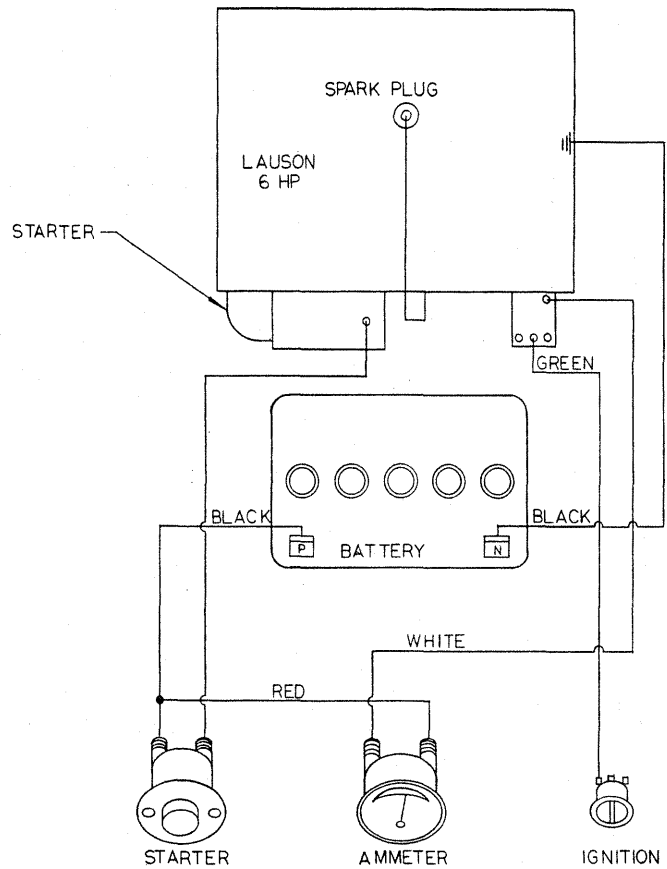
IMPORTANT — Never run unit without fluid or warranty will be voided. If unit is taken apart for service make sure all parts are clean before assembling unit. After service it is advisable to install new fluid. When raising or lowering attachments, after unit is either up or down, make sure handle is in neutral. Never hold open as this will cause harm to unit over a period of time.

TROUBLE SHOOTING CHART

Trouble	Probable Cause	Remedy
Slow action with tractor engine at operating speed	Belt slipping	Tighten Belt
	Improper type of oil	Replace Oil
	Low Oil Supply	Fill oil to proper level
	Air lock	Loosen allen screw on top and operate to release air
	Slow engine RPM	Speed engine
Attachment not holding in raised position	Oil leak in system	Check all connections
	Improper type of oil	Use Wheel Horse (4822)
	Oil leak at seals	Replace
Excessive noise or chattering	Insufficient oil	Fill with proper oil
	Unit run at too high a RPM	Reduce shaft speed to recommended speed as originally equipped
	Improper oil	Drain and refill system with correct oil (4822)
Excessive Heating	Restriction in the system such as kinked or pinched lines	Replace defective hoses. Straighten kinked hoses and check fittings for obstruction
	Insufficient oil	Fill with 4822 to proper level
Unit does not operate	Low Oil	Check and fill
	"O" Rings worn in pump and cylinder	Replace with new "O" Rings
	Pulley loose on pump	Tighten



Wiring for 753



Wiring for 653

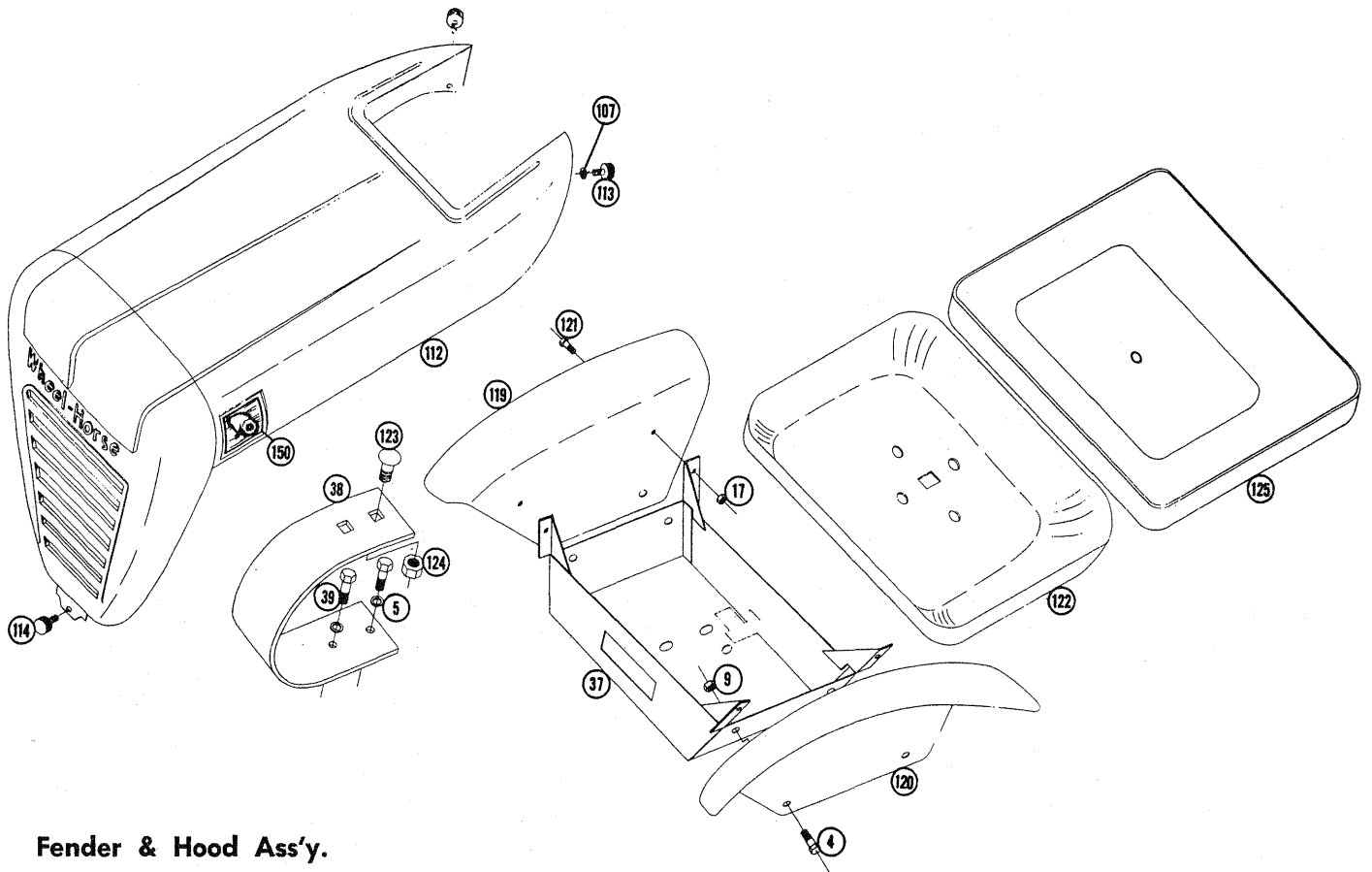
PARTS LIST for MODELS 633, 653 and 753 LAWN and GARDEN TRACTORS

(Except Transmission — see Model 5025 Transmission break down and Parts List.)

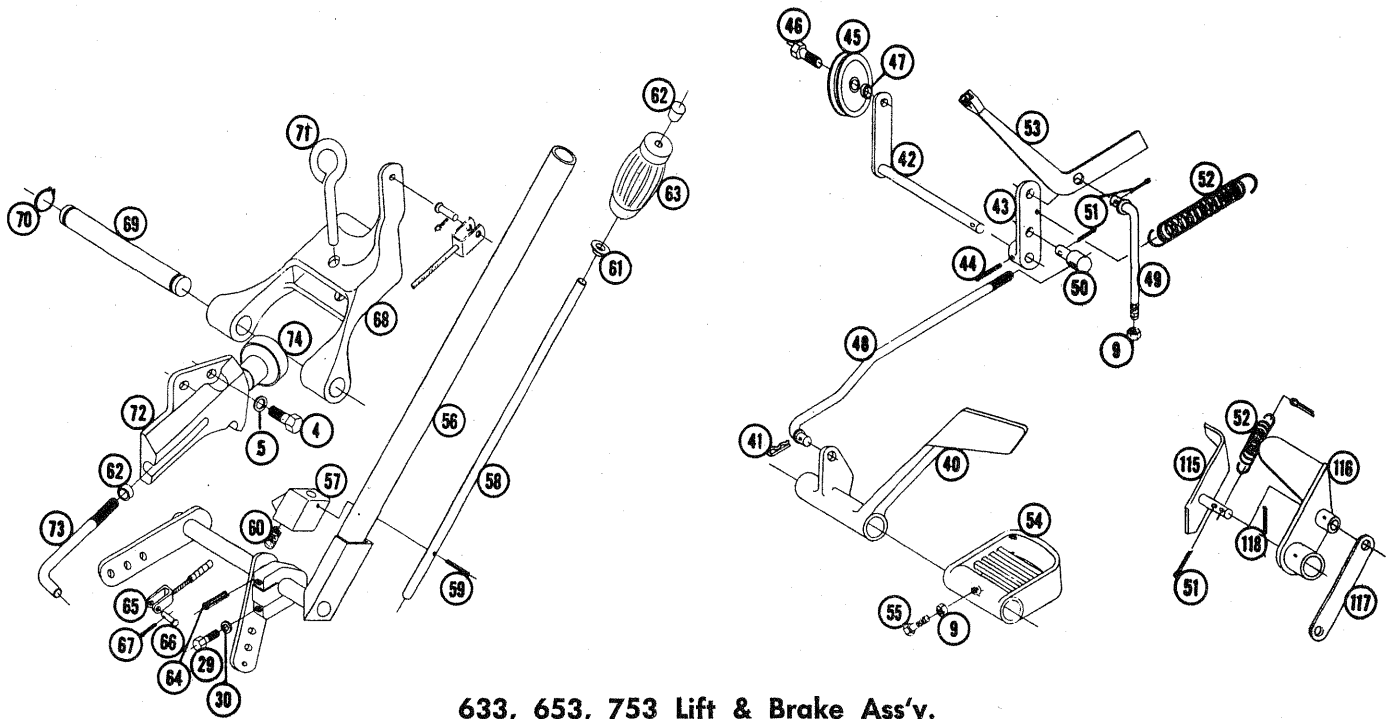
When ordering parts always list Part No. and name of part.

Ref. No.	Part No.	Description	No. Req'd.
1	2290	Ass'y. Frame	1
2	1611	Pulley	1
3	909862-4	Set Screw $\frac{3}{16}$ - 18 x $\frac{3}{16}$ Hex Soc.	1
4	908032-4	Bolt Hex $\frac{3}{8}$ - 16 x $\frac{3}{4}$	12
5	920083-4	Lockwasher $\frac{3}{8}$ Dia.	9
6	937014	Key #9 Woodruff	1
7	3574	Hub - Rear Wheel	2
8	909554-4	Set Screw Sq. Hd. $\frac{3}{8}$ - 16 x 1	2
9	915113-6	Nut - Hex - Nylock $\frac{3}{8}$ - 16	21
10	937022	Key #15 Woodruff	2
11	1649	Axle - Front	1
12	1030	Fitting - Grease - Straight	5
13	1481	Fitting - Grease - 45°	1
14	2268	Ass'y. Hood Stand	1
15	2271	Ass'y. Fuel Tank	1
16	910057-4	Bolt - $\frac{1}{4}$ - 20 x $\frac{5}{8}$ Fil. Hd.	4
17	915111-6	Nut - Hex. Nylock $\frac{1}{4}$ - 20	14

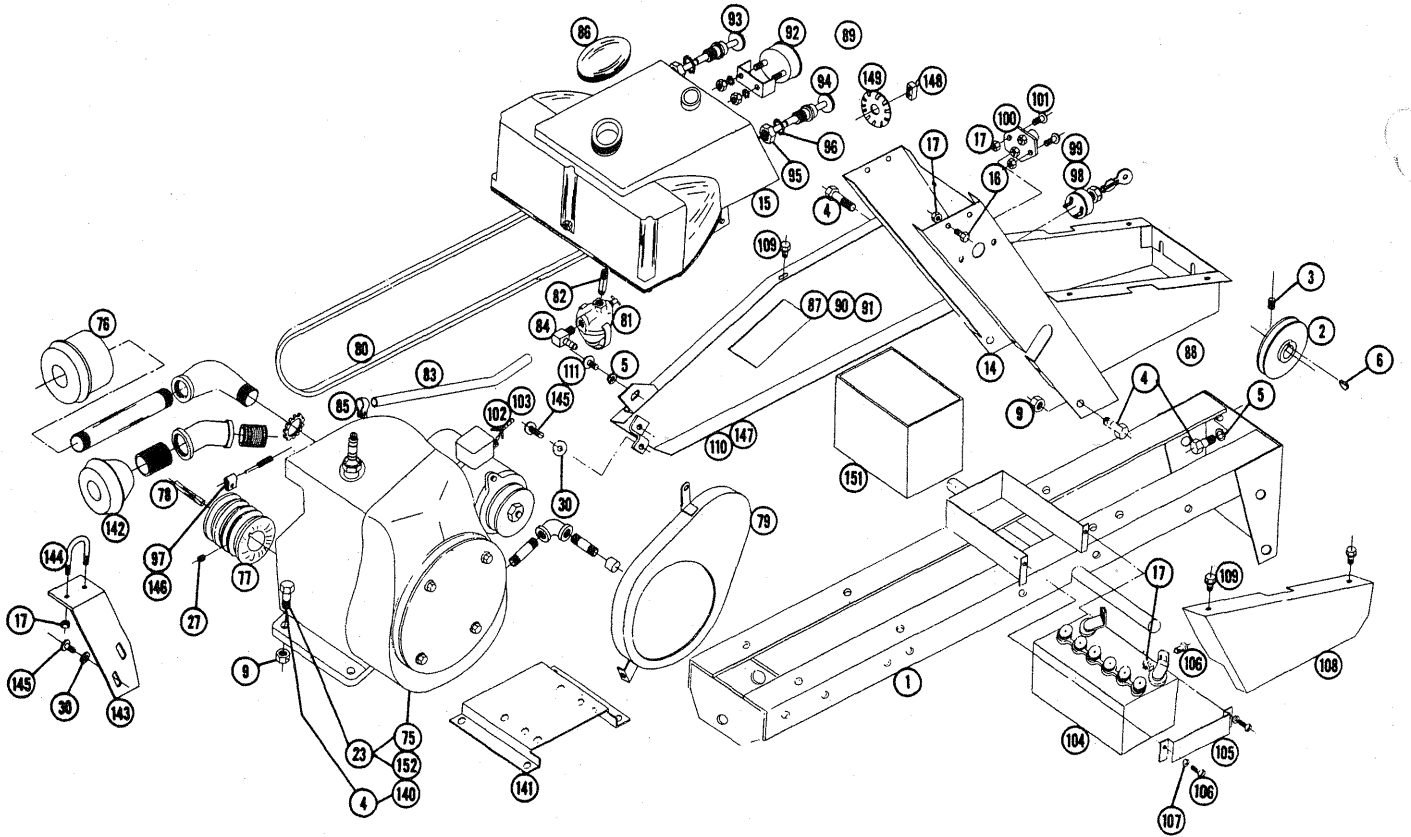
Ref. No.	Part No.	Description	No. Req'd.
18	1900	Link - Steering Pivot	1
19	1932	Shaft - Steering Lower	1
20	4413	Sector - Steering	1
21	933215	Roll Pin $\frac{1}{4}$ x $\frac{1}{4}$	3
22	4412	Support Steering	1
23	908035-4	Bolt - Hex. $\frac{3}{8}$ - 16 x $1\frac{1}{4}$	6
24	3945	Shaft - Steering - Upper	1
25	3917	Gear - Steering Pinion	1
26	1083	Collar	1
27	909848-4	Set Screw $\frac{1}{4}$ - 20 x $\frac{1}{4}$ Hex.	2
28	2294	Ass'y. Pin and Plate	1
29	908015-4	Bolt - Hex. $\frac{5}{16}$ - 18 x $\frac{1}{2}$	4
30	920082-4	Lock Washer $\frac{3}{8}$ Dia.	7
31	1899	Arm - Steering	2
32	933216	Roll - Pin $\frac{1}{4}$ x $1\frac{3}{8}$	2
33	1898	Ass'y. Spindle	2
34	1772	Ass'y. Ball Joint R.H.	1



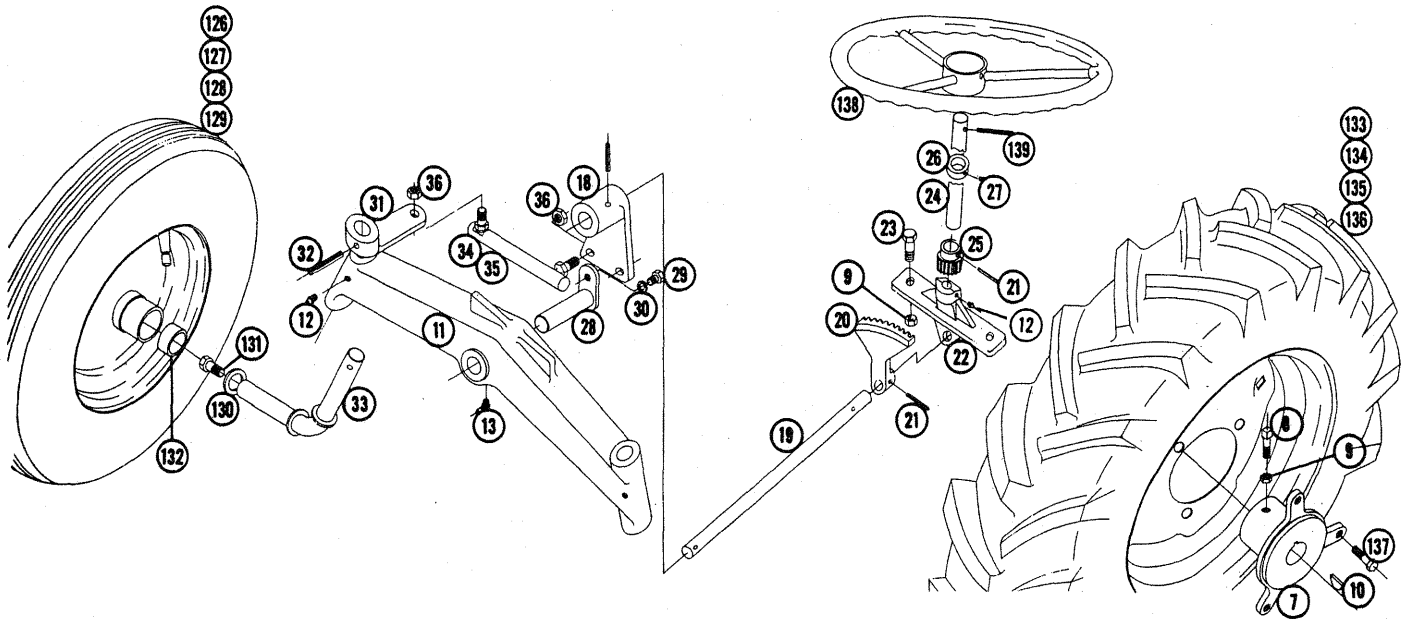
Fender & Hood Ass'y.



633, 653, 753 Lift & Brake Ass'y.



Main Frame Ass'y.

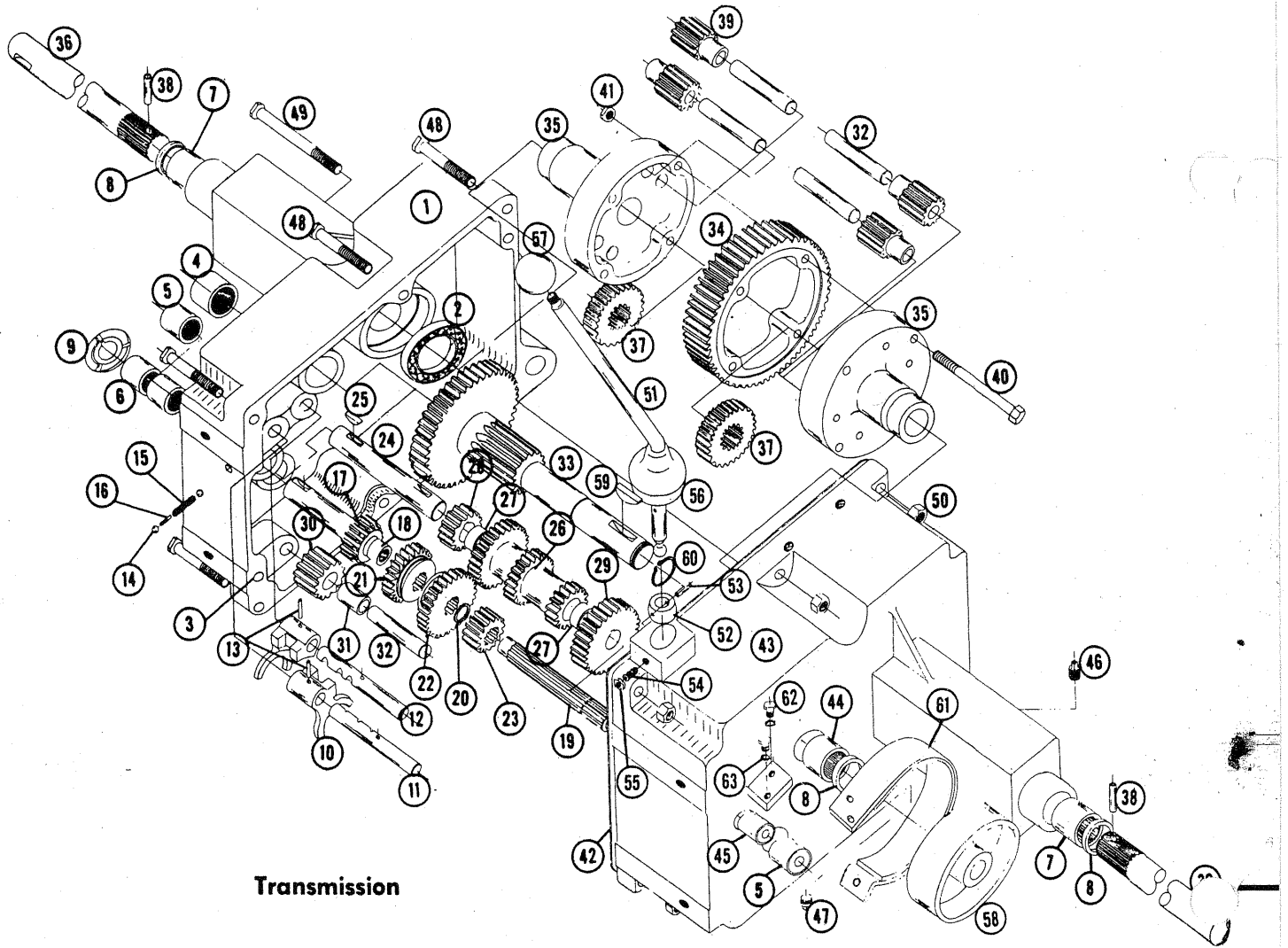


633, 653, 753 Steering & Wheel Ass'y.

PARTS LIST for MODELS 633, 653 and 753 LAWN and GARDEN TRACTORS

When ordering parts always list Part No. and name of part.

Ref. No.	Part No.	Description	No. Req'd.	Ref. No.	Part No.	Description	No. Req'd.
35	1773	Ass'y. Ball Joint L.H.	1	94	4456	Ass'y. Control - Choke	1
36	915002-6	Nut Hex - Nylock $\frac{3}{8}$ - 24	4	95	1364	Nut - $\frac{3}{16}$ Round	2
37	1840	Ass'y. Tool Box	1	96	1331	Lock Washer $\frac{1}{16}$ Shake Proof	2
38	3537	Spring - Seat	1	97	1277	Clip (Kohler)	2
39	908034-4	Bolt Hex $\frac{3}{8}$ - 16 x 1	2	98	1747	Ass'y. Switch Ignition (Kohler)	1
40	2267	Pedal - Clutch	1	99	3656	Ass'y. Switch Ignition (Lauson)	1
41	1372	Hair Pin	1	100	1751	Ass'y. Switch Starter	1
42	3950	Ass'y. Idler Arm & Shaft	1	101	909055-4	Bolt $\frac{1}{4}$ - 20 x $\frac{3}{4}$ Rd. Hd.	2
43	3979	Arm - Clutch Rod Pivot	1	102	3063	Wiring Harness (Kohler)	1
44	933158	Roll Pin - $\frac{1}{8}$ x $1\frac{1}{4}$	1	103	3596	Wiring Harness (Lauson)	1
45	1623	Pulley - Idler	1	104	3653	Battery	1
46	1363	Bolt $\frac{3}{8}$ - 16 x $\frac{7}{8}$ Special	1	105	4206	Clamp - Battery	1
47	1536	Bushing	1	106	908002-4	Bolt - Hex $\frac{1}{4}$ - 20 x $\frac{5}{8}$	4
48	2593	Rod - Clutch	1	107	920081-4	Lock Washer $\frac{1}{4}$ Dia.	5
49	3935	Rod - Brake	1	108	4419	Shield	1
50	1861	Stud - Clutch Rod	1	109	1385	Screw - Hex - Sems $\frac{1}{4}$ - 20 x $\frac{1}{2}$	5
51	932017-4	Cotter Pin $\frac{1}{8}$ x 1	4	110	4450	Ass'y. Belt Guard (Kohler)	1
52	1014	Spring - Clutch	2	111	909082-4	Screw - Rd. Hd. $\frac{3}{8}$ - 16 x $\frac{1}{2}$	1
53	4417	Ass'y. Lever & Knob - Brake	1	112	2582	Ass'y. Hood Stand	1
54	4421	Foot Rest	2	113	1345	Thumbscrew $\frac{1}{4}$ - 20 x $\frac{3}{4}$	2
55	909555-4	Set Screw $\frac{3}{8}$ - 16 x 1 Sq. H. Cup Pt.	2	114	1346	Thumbscrew $\frac{1}{4}$ - 20 x $\frac{3}{8}$	1
56	2266	Ass'y. Lift Lever - Manual	1	115	4246	Ass'y. Trip Lever	1
57	4438	Plunger	1	116	4239	Pedal - Attachment Clutch	1
58	4439	Rod	1	117	3933	Link	1
59	933168	Roll Pin $\frac{5}{32}$ x $1\frac{1}{16}$	1	118	933188	Roll Pin $\frac{3}{16}$ x 1	1
60	3624	Spring	1	119	3983	Fender R.H.	1
61	3578	Guide - Plunger	1	120	3984	Fender L.H.	1
62	3680	Cap	2	121	908003-4	Bolt - Hex. $\frac{1}{4}$ - 20 x $\frac{3}{4}$	4
63	1000	Handle - Grip	1	122	3973	Seat	1
64	932036-4	Cotterpin $\frac{3}{16}$ x $1\frac{1}{2}$	2	123	900112-4	Bolt Carriage $\frac{1}{2}$ - 13 x 1	1
65	3931	Ass'y. Cable	1	124	915115-6	Nut - Hex - Nylock $\frac{1}{2}$ - 13	1
66	932120-4	Pin - Clevis $\frac{1}{4}$ Dia.	2	125	3978	Cushion - Seat	1
67	932001-4	Cotter Pin $\frac{1}{16}$ x $\frac{3}{4}$	2	126	1709	Ass'y. Wheel - Front	2
68	3926	Hitch	1	127	1712	Wheel	2
69	3988	Pin - Hitch	1	128	1656	Tire	2
70	S-50-75	Snap Ring $\frac{3}{4}$ Shaft	2	129	1657	Tube	2
71	1813	Tool Pin	1	130	2844	Washer	2
72	2274	Quadrant	1	131	908033-6	Bolt - Hex $\frac{3}{8}$ - 16 x $\frac{7}{8}$ Nylock	2
73	2179	Rod Height Control	1	132	2816	Hub Cap	2
74	2196	Knob Height Control	1	133	1667	Ass'y. Wheel & Tire Rear	2
75	1799	Ass'y. Engine 7 H.P. Kohler (Elec.)	1	134	1700	Wheel	1
76	1744	Muffler	1	135	1662	Tire - All Purpose	1
77	1621	Pulley	1	136	1654	Tube	1
78	1349	Key $\frac{1}{4}$ x $\frac{1}{4}$ x $1\frac{1}{2}$	1	137	1004	Lug Bolt	6
79	4420	Guard - Engine Belt	1	138	4414	Wheel - Steering	1
80	1576	"V" Belt - Drive	1	139	933191	Roll Pin $\frac{3}{16}$ x $1\frac{1}{8}$	1
81	1786	Ass'y. Fuel Strainer	1	140	2638	Ass'y. Engine 6 H.P. Lauson (Elec.)	1
82	1192	Nipple - Fuel Tank	1	141	4416	Base	1
83	1796	Hose - Fuel Line	1	142	1739	Muffler	1
84	1217	Fitting - Elbow	1	143	2297	Brace - Muffler	1
85	4256	Clip - Fuel Line	1	144	1240	"U" Bolt	1
86	3998	Cap - Fuel Tank	1	145	1432	Screw - Rd. Hd. $\frac{5}{16}$ - 24 x $\frac{1}{2}$	3
87	2589	Decal - 753	1	146	3348	Clip - Choke Cable (Lauson)	1
88	4418	Decal - Shift & Serial No.	1	147	4423	Ass'y. Guard - Drive Belt (Lauson)	1
89	4422	Decal - Instrument Panel	1	148	3279	Ass'y. Switch & Nut - Toggle	1
90	2645	Decal - 633	1	149	4249	Plug - Button	1
91	2637	Decal - 653	1	150	4410	Decal Wheel Horse Emblem	2
92	1745	Ammeter	1	151	4403	Tool Box	1
93	4455	Ass'y. Control - Throttle	1	152	2893	Ass'y. Engine 6 H.P. Kohler (Recoil)	1



Transmission

5025 TRANSMISSION PARTS LIST

When ordering parts always list Part No. and name of part.

Ref. No.	Part No.	Description	No. Req'd.	Ref. No.	Part No.	Description	No. Req'd.
1	3900	Case - Transmission	1	33	3903	Gear - Brake Shaft	1
2	1533	Bearing - Ball	1	34	3906	Gear - Bull	1
3	3915	Pin - Locating	2	35	3905	Case - Differential	2
4	1532	Bearing - Needle	1	36	3904	Axle - Rear	2
5	1529	Bearing - Needle	2	37	3908	Gear - Axle	2
6	1508	Bearing - Needle	2	38	933217	Pin - Roll 1/4 x 1 1/2	2
7	1528	Bearing - Needle	2	39	4235	Gear - Differential Pinion	4
8	1232	Seal - Oil	3	40	1329	Cap Screw - Hex 3/16 - 18 x 3/4	4
9	1303	Seal - Oil	1	41	1316	Nut - Hex - Lock 3/16 - 18	4
10	3503	Fork - Shift	2	42	3912	Gasket	1
11	3515	Rail - Front Shift	1	43	3901	Case Transmission	1
12	3516	Rail - Rear Shift	1	44	1530	Bearing - Needle	1
13	933156	Pin - Roll 1/6 x 1	2	45	1531	Bearing - Needle	1
14	3517	Ball - Stop	2	46	943460-4	1/4 Std. Pipe Plug	1
15	3518	Spring - Stop	1	47	943420-4	3/8 Std. Pipe Plug	1
16	3573	Shift Pin - Stop	1	48	908038-4	Bolt - Hex - 3/8 - 16 x 2	5
17	3522	Gear - Input Drive	1	49	908043-4	Bolt - Hex - 3/8 - 16 x 3 1/2	1
18	1518	Bearing - Needle	1	50	915113-6	Nut - Nylock 3/8 - 16	6
19	3907	Shaft - Spline	1	51	5278	Stick - Shift Ass'y.	1
20	S-50-75	Snap Ring Truarc 3/4 Shaft	1	52	3514	Collar - Shift	1
21	3523	Gear (Hi & Inter.)	1	53	933168	Pin - Roll 5/32 x 1 3/16	1
22	3524	Gear (Low & Reverse)	1	54	1239	Screw - Soc. Hd. - Set 1/4 - 20 x 3/4	1
23	3526	Gear - Spline Shaft	1	55	915111-4	Nut - Hex Lock 1/4 - 20	1
24	3910	Cluster - Shaft	1	56	3577	Boot - Shift Lever	1
25	937014	Key - #9 Woodruff	2	57	1001	Knob - Shift	1
26	3525	Gear - Cluster	1	58	3902	Drum - Brake	1
27	1504	Bushing - Bronze	2	59	937022	Key #15 Woodruff	1
28	3528	Pinion - Cluster Shaft Reduction	1	60	S-50-100	Snap Ring 1" Shaft	1
29	3527	Gear - Cluster Shaft Reduction	1	61	4437	Band - Brake	1
30	4204	Gear - Reverse Idler	1	62	908002-4	Bolt - Hex 1/4 - 20 x 5/8	2
31	1516	Bushing - Bronze	1	63	920081-4	Washer - Lock 1/4	2
32	3909	Pin - Reverse Idler	5				



Service Bulletin

38

November 14, 1962

TO OUR DEALERS AND DISTRIBUTORS

SUBJECT: INTERCHANGEABILITY OF RMR-3262 AND RMR-3662 MOWERS

We have had inquiries regarding the installation of 1962 mowers on 1963 tractors.

THEY ARE COMPLETELY INTERCHANGEABLE, however, when the RMR-3262 mower is installed on Models 633, 653, 753, it is necessary to reverse the front wheels to prevent any possibility of the front wheels interfering with the mower skids. The front wheel hubs are offset and by placing the long hub on the outside, the front tread width is reduced to give adequate clearance between the wheel and the skid.

D. J. Palbykin

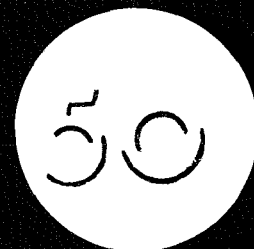
D. J. PALBYKIN

CUSTOMER RELATIONS MANAGER

DJP:csu



Service Bulletin



November 12, 1963

TO OUR DEALERS AND DISTRIBUTORS

SUBJECT: 1964 TRANSMISSIONS

The transmissions used on the 1964 Model tractors are as follows:

<u>TRACTOR MODEL</u>	<u>TRANS. PART NUMBER</u>
34-R	5046
34-E	5046
604	5046
654	5046
704	5046
854	5025
1054	5047

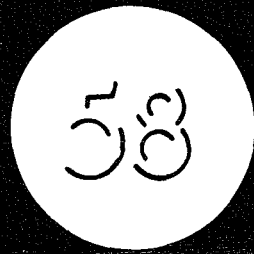
The part number 5025 and 5046 Transmission are exactly alike with the exception of the shift levers. To eliminate double inventory and possible shipping errors, ALL replacement transmissions, including the part number 5047 Transmission, will be shipped LESS the shift lever and boot. The shift lever and boot should be retained from the defective transmission and re-installed in the replacement.

Jack D. Walton
Jack D. Walton
Service Manager

JDW:csu



Service Bulletin



December 14, 1964

SUBJECT: WHEEL HORSE TRANSMISSIONS

We are listing below the transmissions used on 1965 model tractors, as well as interchangeability on previous models for your information.

<u>Tractor Model</u>	<u>Trans. Part No.</u>	<u>List Prices</u>
1054-A, 1054 & 953	5051	\$276.05
1075 & 875	5052	\$467.00
155 & 105	5048	\$212.80
401, ST 550 & ST 400	5010	*
RJ-59 & RJ-58	5003	*
All Others	5049	\$220.50

INTERCHANGEABILITY

<u>Trans. Part No.</u>	<u>Replaces</u>
5051	5047 & 5045
5052	-----
5048	-----
5010	-----
5003	-----
5049	5046, 5025, & 5007

All transmissions are shipped LESS the shift lever, boot, and the lubricant.
This bulletin supercedes Service Bulletin No. 50.

* Complete transmissions not available. Replacement parts available through our Parts Department. (Reference Service Bulletin No. 37)

Jack D. Walton
Jack D. Walton
Service Manager

JDW: jr

Wheel Horse Service Bulletins 1961 - 1990: **#60** Issued: January 15, 1965

Transmission - New Shift Rails

[Previous](#) [Table of Contents](#) [Next](#)

The new shift rails (Parts No. 5615 and 5616) currently used in the 1965 model transmissions are interchangeable with the shift rails (Parts No. 3515 and 3516) used in all previous model transmissions. The new shift rails will interchange either individually or in pairs, provided a Part No. 3573 Shift Stop Pin is used. This pin is a standard part used in all units prior to 1965.

If it becomes necessary to replace one of the earlier shift rails, we recommend that both new shift rails (Parts No. 5615 and 5616) together with the new Part No. 5614 Shift Stop Pin be installed. The additional cost to the customer is negligible and will definitely eliminate the possibility of the transmission locking in two gears.

CAUTION!! The Part No. 5614 Shift Stop Pin cannot be used unless both new style shift rails have been installed.

Wheel Horse Service Bulletins 1961 - 1990: **#69** Issued: December 1965

Replacement Switches

[Previous](#) [Table of Contents](#) [Next](#)

-To ALL DEALERS AND DISTRIBUTORS-

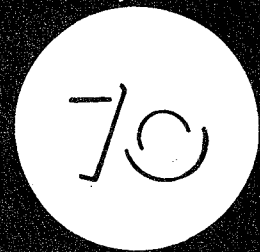
The part number of the #3656 (single terminal) switch has been changed to #6890. The 3-terminal #3656 switch remains unchanged. The following indicates the proper switch for the various models.

<u>6890 Switch</u>	<u>3656 Switch</u>	<u>4987 Switch</u>
552	ST-550	32E
33E	551	34E
653		654
605		L-155
606		655
		L-156
		656
		RE-65
		RE-66

Please use the proper part number when ordering replacements.



Service Bulletin



December, 1965

SUBJECT: TRANSMISSIONS

Transmission usage, including 1966 tractor, and interchangeability is as follows

USAGE

Tractor Model No.	Transmission Part No.
1276 & 1076	5054
876, 875 & 1075	5052
1054A, 1054 & 953	5051
L-105 & L-155	5048
401, ST-550 & ST-400	*5010
RJ-59 & RJ-58	*5003
All Others	5053

*Complete transmissions not available. Reference Service Bulletin Number 37.

INTERCHANGEABILITY

Transmission Part No.	Replaces
5054	-----
5053	5049, 5046, 5025 & 5007
5052	-----
5051	5047 & 5045
5048	-----
5010	-----
5003	-----

All three speed transmissions are shipped less: shift lever, boot and lubricant.

This bulletin supercedes Service Bulletin No. 50 & 58.

Jack D. Walton
Jack D. Walton
Service Manager

JDW:rac

Wheel Horse Service Bulletins 1961 - 1990: **#80** Issued: December 1966
Transmissions Usage and Interchangeability

[Previous](#) [Table of Contents](#) [Next](#)

Transmission usage and interchangeability, including 1967 model tractors is as follows:

USAGE

<u>Tractor Model No.</u>	<u>Transmission Part No.</u>
1257, 1057	5058
1277, 1276, 1077, 1076	5054
877, 876, 875, 1075	5052
1054A, 1054, 953	5059
L-155, L-105	5048
401, ST-550, ST-400	*5010
RJ-59, RJ-58	*5003
All Others	5053

*Complete transmission not available. Reference Service Bulletin Number 37.

INTERCHANGEABILITY

<u>Transmission Part No.</u>	<u>Replaces</u>
5059	5051, 5047, 5045
5058	-----
5054	-----
5053	5049, 5046, 5025, 5007
5052	-----

This bulletin supercedes Service Bulletin #70.

REMINDER:

Additional service information on Uni-Drive and Wheel-a-Matic transmissions may be found on the following Service Bulletins: #23, 52, 55, 60, 62, and 68.

Wheel Horse Service Bulletins 1961 - 1990: **#348** Issued: March 1983
Installation information - Fuel Tank Service Assembly 100034

[Previous](#) [Table of Contents](#) [Next](#)

To All Dealers:

1. Subject

1.1 The following 1962-64 tractors use a die-cast aluminum fuel tank and control console assembly:

Year	Model	Tank Part No's.
1962	32R, 32E, 502, 552, 702	4405/2271 Tank Assembly
1963	33R, 33E, 633, 653, 753	4406 Tank Top*
1964	854	4407 Tank Bottom 4452 Tank Gasket* 101442 Steering Shaft Bushing* 1466 Speed Nut for Hood Thumb Screws

* Part Still Available at Time of Publication

1.2 For many years, original equipment tanks have not been available, and S/A 100034 has been substituted. This Service Assembly is used to correct fuel leaks and consists of a smaller sheet metal tank which fits inside the fuel cavity of the original tank. To use this assembly, the upper portion of the tank (P/N 4406) must still be serviceable as a structural part.

The following installation information is supplied to assist you in installing this service assembly.

NOTE

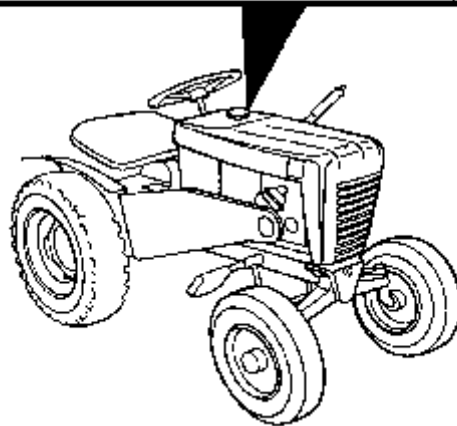
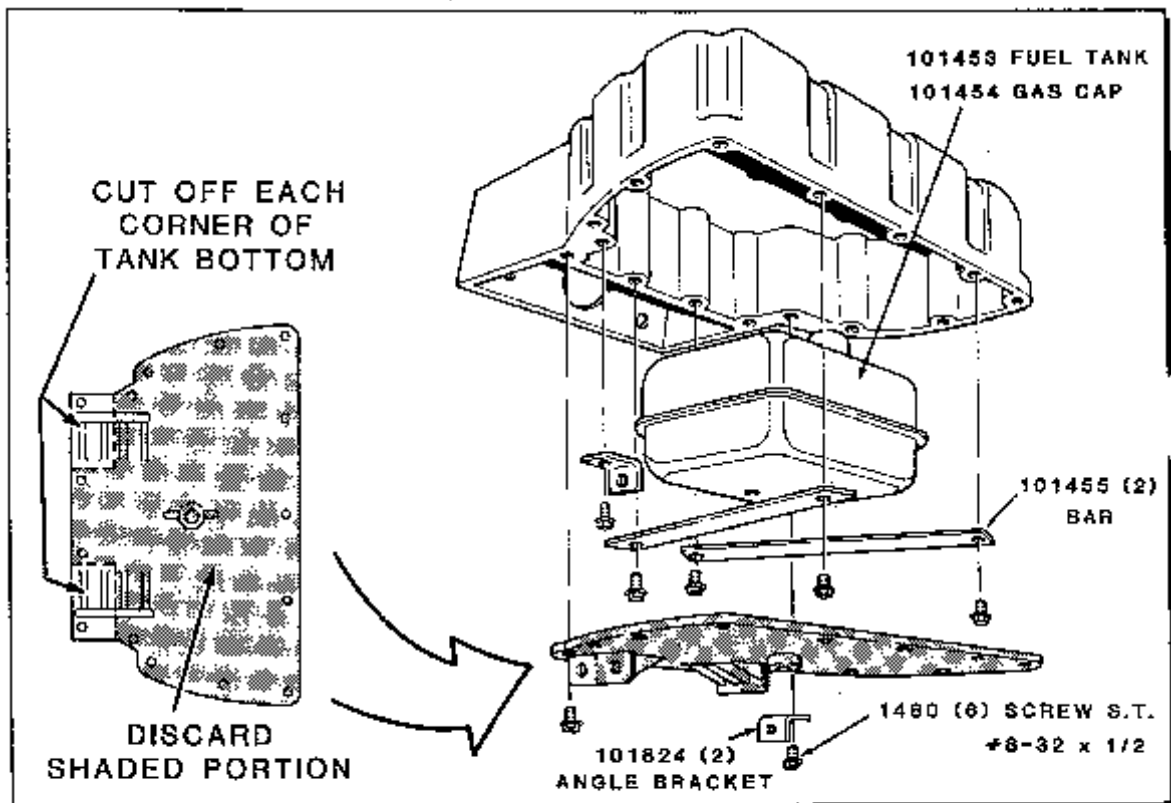
The original fuel tank capacity is 4 quarts. The new tank holds approximately 2 quarts. If fuel capacity is important to your customer, alternate methods of sealing the original fuel tank can be attempted, such as gel-gasket or epoxy sealing materials. Be sure any alternative method used is approved for sealing fuel systems.

ROUTING	SERVICE MANAGER	SALES MANAGER	PARTS MANAGER	CHIEF MECHANIC	MECHANIC NO 1	MECHANIC NO 2	MECHANIC NO 3	MECHANIC NO 4	RETURN THIS TO
INITIAL HERE →									

2. Service Action

2.1 To install the assembly:

- a. Remove and discard the fuel cap.
- b. Disassemble as required to permit removing the fuel tank bottom.
- c. Using a hacksaw, cut the left and right rear corners off the fuel tank bottom as shown in the illustration.
- d. Install new parts as shown.



Wheel Horse Service Bulletins 1961 - 1990: **#394a** Issued: September 1986
Differential Service

[Previous](#) [Table of Contents](#) [Next](#)

1961 - 551, 701 1962 - 502, 552, 702, 32E, 32R 1963 - 33E, 33R, 603, 633, 653, 753 1964 - 34E, 34R, 604, 654, 704, 854, 1045 1965 - 605, 655, 855, 1055 1966 - L-106, L-156, 606, 656, 856, 876, 1046, 1056 1967 - L-107, L-157, 607, 657, 857 1968 - Lawn Ranger: 1-1631, 1-2631 "500" Special; 1-3631 Commando 6 & 8; 1-4631, 1-4831 1969 - Work Horse 700; 1-3745, 1-3741 1971 - Work Horse; 1-0100 1972 - Commando 800; 1-0110 Raider 8; 1-0330 Raider 10; 1-0301 Charger 10; 1-0410 1973 - 8 HP 4-Speed; 1-0120 8 HP 8-Speed; 1-0370 10 HP 8-Speed; 1-3060, 1-0365 10 HP Auto; 1-0470, 1-0475 1974 - B-80 4-Speed; 1-0410, 1-0145 B-100 Auto; 1-0510 1975 - B-80 4-Speed, 1-0441 (Early Production) B-100 Auto 1-0511

1. Subject

1.1 The above models use Wheel Horse mechanical transmissions or automatic transaxles having a differential secured with 5/16" bolts. The differential end caps (P/N 101053) and ring gear (P/N 3906) are not available and must be serviced with current parts (secured with 3/8" bolts).

1.2 Service Assembly, part number 112571, has been released to simplify ordering the necessary parts.

2. Service Action

2.1 If either the ring gear (3906) or end cap (101053) are needed, order one each, S/A 112571, which consists of:

<u>Part No.</u>	<u>Description</u>	<u>Qty.</u>
105062	Differential End Cap	2
105063	Differential Ring Gear	1
908138	Bolt 3/8-16 x 3-1/4, Grade 5	4
*107374	Special Washer	4
**108881	Special Nut 3/8-16	4

* NOTE - Special Washer goes under bolt head, not under nut.

** Torque to 30-35 ft. lbs.

2.2 1971 and prior tractors listed above are equipped with two piece differential pinions. These two piece pinions cannot be used with the differential end cap and ring gear included in S/A 112571. Order and install (4) differential pinions, part number 101623, when using S/A 112571 to service the differentials of these tractors.

ROUTED	SERVICE MANAGER	SALES MANAGER	PARTS MANAGER	CHIEF MECHANIC	MECHANIC NO 1	MECHANIC NO 2	MECHANIC NO 3	MECHANIC NO 4	RETURN THIS TO
INITIAL HERE									

Wheel Horse Service Bulletins 1961 - 1990: **#430** Issued: October 1988

Steering Sector Service - 1962-1965 Tractors

[Previous](#) [Table of Contents](#) [Next](#)

1. Subject

1.1 Part numbers 6471, 4413, and 5627 steering sectors can no longer be produced due to tooling changes made to make current production parts.

1.2 Please use the listing below to obtain the correct alternate part to service the tractors indicated.

2. Service Action

2.1

ORIGINAL P/N	TRACTOR USED ON	SERVICE WITH:
4413 Sector Gear	32E, 32R, 33E, 33R 502, 552, 603, 633 653, 702, 753	5627 Sector Gear and 933229 Spirol Pin. Steering Shaft spirol pin hole must be enlarged to 5/16" diameter
4413 Sector Gear	34E, 34R, 604, 654, 704, 854, 1045	6565 Steering Sector and Shaft Assembly (all-welded construction)
5627 Sector Gear	L-105, L-155, 605, 655, 855, 875, 1055, 1075	6565 Steering Sector and Shaft Assembly (all-welded construction)

NOTE: 5627 Sector Gear is now obsolete and no longer available

ROUTING	SERVICE MANAGER	SALES MANAGER	PARTS MANAGER	CHIEF MECHANIC	MECHANIC NO 1	MECHANIC NO 2	MECHANIC NO 3	MECHANIC NO 4	RETURN THIS TO
INITIAL HERE →									

>