

Wheel-Horse

Reg. U. S. Pat. Off.

WT-30 TILLER

PARTS LIST AND INSTRUCTIONS

ASSEMBLY INSTRUCTIONS

(A) Remove tiller from box. You will note there are 6 separate items.

- | | | |
|-------------------|-------------------------|---------------------------|
| 1. Main Tiller | 3. Speed Reduction Unit | 5. Speed Reduction Belt |
| 2. Hitch Assembly | 4. Side Plate | 6. Speed Reduction Shield |

(B) Service engine by using Engine Instruction Book.

(C) Mount hitch assembly to bottom of case and top hole in housing carrier. Bolts will be in hitch. (Item #1).

ASSEMBLING SPEED REDUCTION

(A) Mount speed reduction unit to the right hand frame rail using the two rear holes directly under the engine crankshaft. (Item #2).

(B) Remove the 29" belt from the tractor and install the 34" belt

to the 2½" pulley on the speed reduction unit and to the 4" pulley on the tractor.

(C) Place the 29" belt on the 2½" pulley on the engine to the 7" pulley on the speed reduction unit.

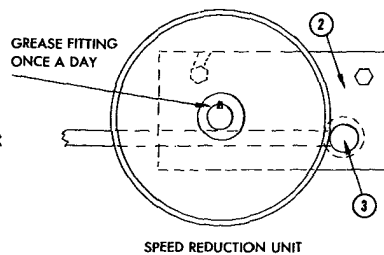
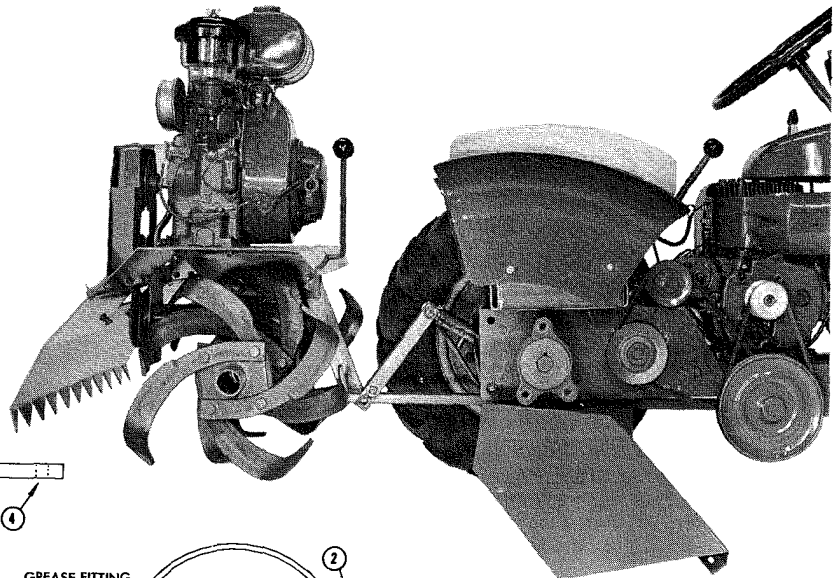
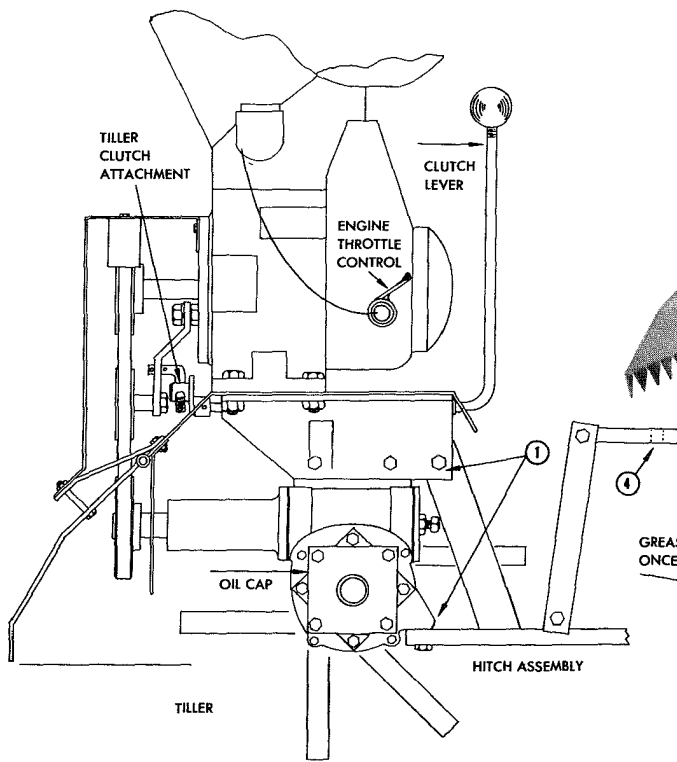
(D) Readjust clutch idler for proper clutching, if necessary, and mount shield.

(E) On '57 thru '59 tractors, the clutch system will have to be converted to '60 models to use tiller mount. Use idler conversion assembly #CC-60.

(I) Now slide tiller hitch into the hole on speed reduction unit. (Item #3).

(J) Slide remaining plate over left hand side and bolt in place as you did right hand unit.

(K) Top clevis will slide directly into the tractor hitch and you are now ready for tilling. (Item #4). (Read operating instructions first).



WHEEL-HORSE PRODUCTS

• SOUTH BEND, INDIANA

OPERATING INSTRUCTIONS

(A) To start Engine, first make sure clutch is disengaged and push choke to choke position. (Never over-choke).

(B) Adjust hand throttle to desired running speed and mount tractor before engaging clutch.

CAUTION: Never have hands or feet close to tines when tiller is running.

(C) You are now ready to till. Lower tines into ground by using hand lever. After tiller is at desired depth, a maximum of 4", engage tractor clutch and you are on your way.

(D) You will find after you have run tiller for several hours that it will be necessary to readjust the tiller clutch, as a new belt will stretch at first, and it is very important that the belt is reasonably tight as slippage will burn the belt and cut into the pulleys.

(E) In very hard ground, you may find it necessary to go over ground twice, in order to cut up soil fine.

(F) Never run over stony soil fast as tiller will withstand more than the operator. In normal operation, low gear should be used. Avoid all sharp turns with tiller in ground.

(G) It may be necessary to add extra weights to front of tractor to counter-balance tiller. See your dealer and order FW-40 front weight package. This may also be used in conjunction with snow plow and snow caster.

(H) When turning at end of field if it is necessary to put tractor in reverse, make sure tiller clutch is disengaged.

(I) Under normal conditions you will find that on going over the ground the first time you can reach a depth of 5", but by going over twice it is possible to obtain a depth of 8".

(J) Tiller clutch adjustment:

(A) Remove shield.

(B) Remove belt.

(C) Remove cotter key from Idler Link Pin.

(D) Remove Idler Bar by unscrewing bolt from Engine.

(E) Now turn Idler Link Pin out to desired take-up and reassemble.

(K) If necessary to remove Engine always make sure the pulleys are in perfect alignment when reassembling.

(L) It is important that the operator does not over load tiller for first run until worm and gear get run in and tines get polished.

LUBRICATION INSTRUCTIONS

(A) Crank case of tiller is filled at the factory and should need no oil unless after continuous operation, the seals get worn and oil leaks out. If so, replace worn seals and fill crankcase to Filler Hole with No. 90 oil.

(B) For engine, read engine instruction book.

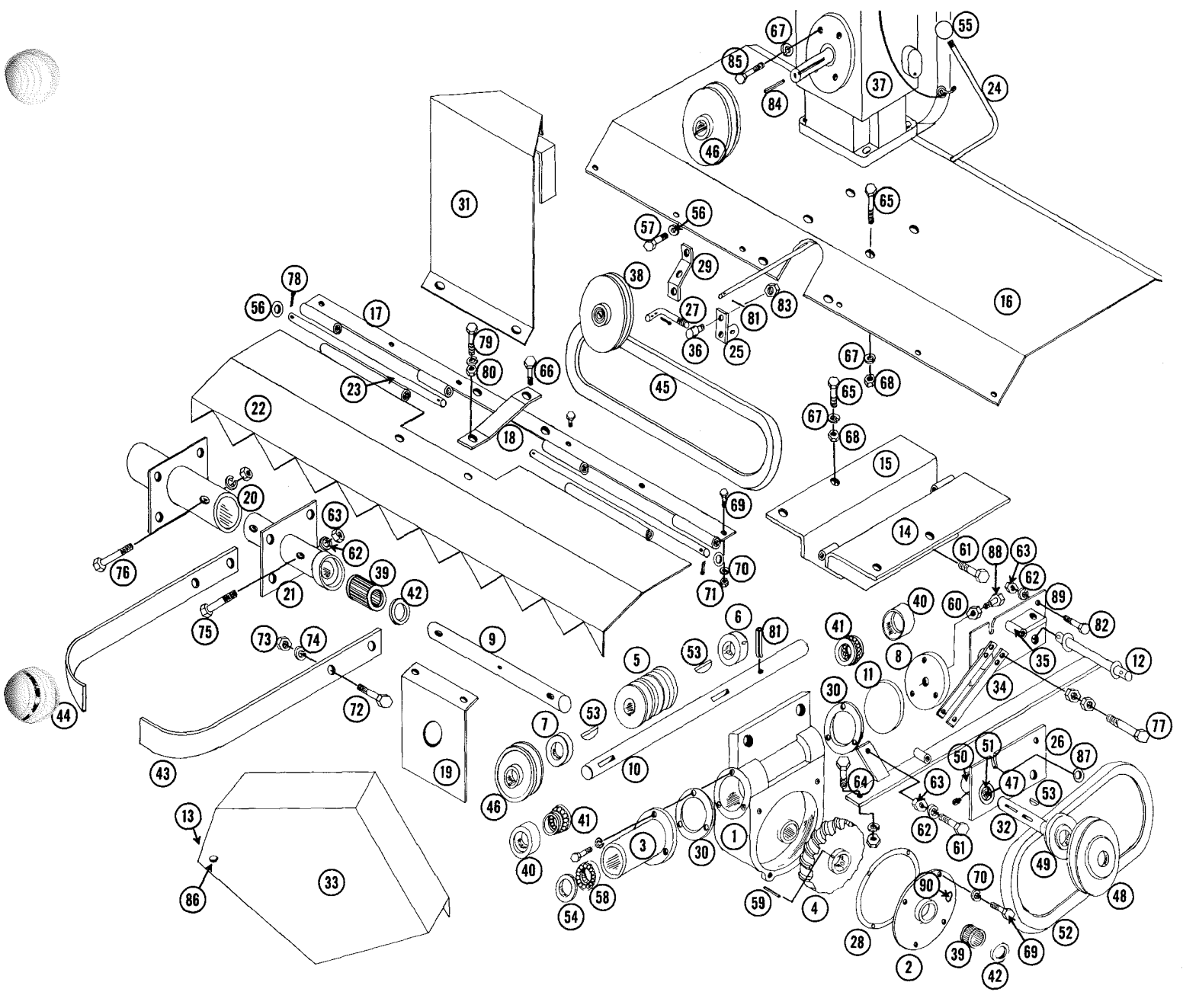
(C) Idler pulley has a sealed bearing and will need no grease.

(D) You will note one zerk on speed reduction unit, which should be greased at least once a day.

TILLER PARTS LIST

Ref. No.	Part No.	Description	No. Req.
1	4000	Tiller Case	1
2	4001	Cover Plate	1
3	4002	Support (outboard)	1
4	4003	Worm Gear	1
5	4004	Worm	1
6	4063	Spacer	1
7	4064	Spacer	1
8	4005	End Plate	1
9	4032	Tine Shaft	1
10	4040	Worm Shaft	1
11	4041	Disc	1
12	4006	Hitch Bar Assy.	1
13	4046	Spacer	1
14	4028	Engine Mount R.H.	1
15	4029	Engine Mount L.H.	1
16	4020	Housing	1
17	4016	Rear Tie Bar	1
18	4019	Drag Support	2
19	4024	Belt Guard	1
20	4010	Tine Shaft Tube	2
21	4011	Tine Shaft Tube	2
22	4014	Drag Plate	1
23	4022	Hinge Rod	2
24	4015	Clutch Lever	1
25	4027	Idler Pivot	1
26	4048	Plate	1
27	4026	Idler Link Pin	1
28	4038	Gasket	1
29	4059	Bar—Idler	1
30	4039	Gasket	2
31	4023	Shield	1
32	4050	Shaft	1

Ref. No.	Part No.	Description	No. Req.
33	4062	Belt Guard	1
34	4021	Lift Arm	2
35	4018	Lift Bar	1
36	1861	Link Pin Swivel	1
37	1793	Engine	1
38	1618	Pulley (Idler)	1
39	1526	Needle Bearing	2
40	1525	Cup (Bearing)	2
41	1500	Cone (Bearing)	2
42	1213	Seal	2
43	4042	Tines R.H.	8
44	4043	Tines L.H.	8
45	1571	Belt	1
46	1611	Pulley	2
47	1523	Needle Bearings	2
48	1600	7" Pulley	1
49	1608	2½" Pulley	1
50	1085	Collar	1
51	1303	Seal	2
52	1572	Belt	1
53	1122	Key—#9	4
54	1234	Seal	1
55	1001	Handle	1
56	1309	⅝ SAE Washer	3
57	1308	HHCS ⅝-24x1	1
58	1502	Ball Bearing	1
59	1299	Roll Pin ⅝x1¾	1
60	1070	⅜-24 Hex Nut (Jam)	1
61	1064	HHCS (⅝-16x1½)	3
62	1039	Lockwasher ⅜	12
63	1016	Hex Nuts ⅜-16	22
64	1028	HHCS (⅝-16x1¼)	1



Ref. No.	Part No.	Description	No. Req.
65	1006	HHCS $\frac{3}{16}$ -18x $\frac{1}{4}$	4
66	1089	HHCS $\frac{3}{16}$ -18x $\frac{3}{4}$	3
67	1196	Lockwasher $\frac{5}{16}$	9
68	1007	Hex Nut $\frac{3}{16}$ -18	8
69	1237	HHCS $\frac{1}{4}$ -20x $\frac{5}{8}$	16
70	1067	Lockwashers $\frac{1}{4}$	16
71	1034	Hex Nuts $\frac{1}{4}$ -20	6
72	1095	HHCS $\frac{3}{16}$ -14x $1\frac{1}{2}$	16
73	1109	Hex Nuts $\frac{3}{16}$ -14	16
74	1117	$\frac{3}{16}$ Lockwasher	16
75	1015	HHCS $\frac{3}{8}$ -16x $1\frac{3}{4}$	2
76	1032	HHCS $\frac{3}{8}$ -16x2	2
77	1167	HHCS $\frac{3}{8}$ -16x $2\frac{3}{4}$	2

Ref. No.	Part No.	Description	No. Req.
78	1002	$\frac{1}{8}$ -1 Cotter	5
79	1301	HHCS $\frac{3}{16}$ -24x $2\frac{1}{4}$	2
80	1183	Hex Nut $\frac{3}{16}$ -24	5
81	1244	Roll Pin $\frac{1}{8}$ x1	2
82	1062	HHCS $\frac{3}{8}$ -16x1	4
83	1302	$\frac{1}{2}$ -20 Nut	1
84	1005	Sq. Key $\frac{3}{16}$ x1	1
85	1195	HHCS $\frac{3}{16}$ -24x $\frac{5}{8}$	1
86	1305	HHCS $\frac{3}{16}$ -18x3	1
87	1018	$\frac{3}{8}$ SAE Washer	2
88	1101	$\frac{3}{8}$ -24x $1\frac{5}{8}$	1
89	4052	Plate	1
90	1013	Plug $\frac{1}{4}$ -N.P.T.	1