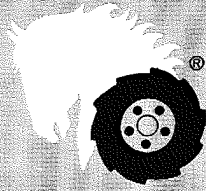


PARTS LIST AND INSTRUCTIONS



Wheel Horse

WHEELHORSE PRODUCTS, INC. • SOUTH BEND, IND.

SNOW THROWER ST-375



ASSEMBLY

Remove snow thrower from carton and fasten the mounting arms, part 5497 and shims, part 4774 to wrapper assembly, part 4461 with four $\frac{3}{8}$ -16 x 1 bolts, part 908034-4 and $\frac{3}{8}$ -16 elastic stop nuts, part 915663-4.

Install control support, part 5503 to mounting arms and secure with four $\frac{3}{8}$ -16 x 1 hex bolts, part 908034-4 and $\frac{3}{8}$ -16 elastic stop nuts, part 915663-4 (**NOTE:** Be sure the drive belt, part 1576 is on the inside of support toward the tractor).

Install the shroud, part 5220 in the grooves of the front and rear rollers, part 1973. Adjust rear rollers by sliding forward. Be sure the rollers turn freely and shroud turns freely, secure with two $\frac{1}{4}$ -20 x $1\frac{1}{4}$ hex bolts, part 908006-4 and two $\frac{1}{4}$ -20 nylock nuts, part 915111-6.

Install crank, part 4764 thru eye bolt, part 5498 in control support and thru hole in wrapper assembly, part 4461 and secure with cotter pin $\frac{1}{8}$ x 1, part 932017-4. Bend both ends around crank.

Slide tube and bar assembly, part 4787 over pin (located at lower rear center of wrapper assembly) and secure with $\frac{5}{8}$ " flat washer, part 920013-4 and

cotter pin, part 932034-4. Insert lift rod, assembly, part 4790 in end of assembly tube and bar.

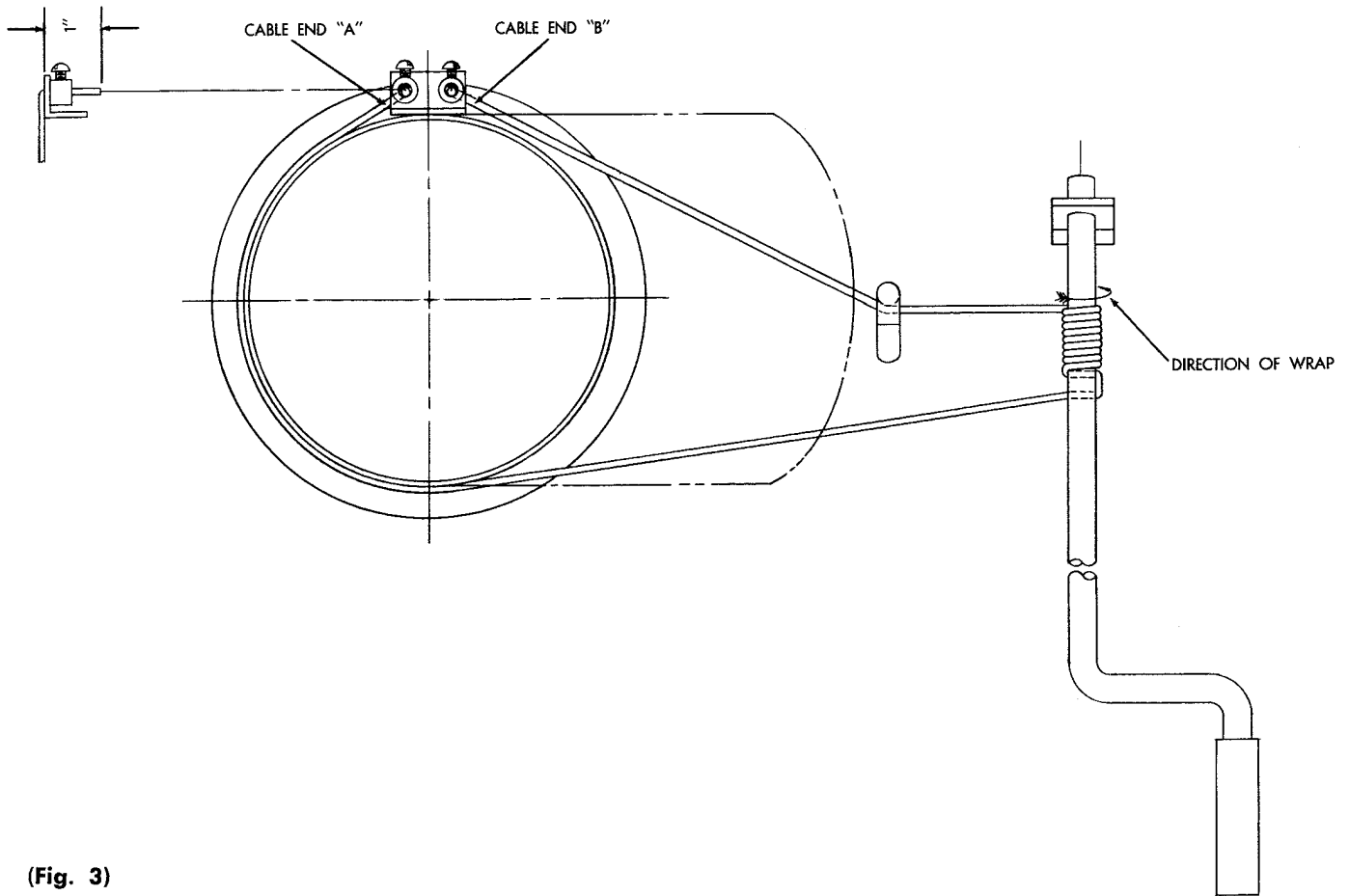
Move wheel adjustment lever all the way forward so the wheels are down. Roll the unit to the tractor and secure with mounting spacer, part 1982 and rod and spacer, part 4776. Secure with $\frac{3}{8}$ -16 elastic stop nut, part 915663-4.

Install power take-off as per instructions which were included with the P.T.-5 package.

NOTE: Be sure the belt, part 1576 has been installed in line with the pulley.

Install idler arm assembly, part 5500 thru mounting arms, part 5497 and secure with $\frac{1}{2}$ " S.A.E. washer, part 920011-4 and cotter pin, part S-52-4. Place belt on idler pulleys, part 1623 and part 4387 making sure that the belt guide bracket, part 3760 is correctly positioned to retain belt in groove of pulley. Install spring, part 5185, between arm on idler arm assembly, part 5500 and hole in wrapper assembly, part 4461.

Install lift rod assembly, part 4790 to the end of the tractor lift cylinder clevis, (see fig. 2) and secure with pin, part 932999-4 and hairpin cotter, part S-52-5.



(Fig. 3)

CABLE WRAPPING

1. Face shroud, part 5220 to the right.
2. Thread cable, part 4795 end "A" up thru hole in collar on the shroud about 1" and secure with screw, part 908980-4.
3. Pull cable around the shroud and thread end of cable "B" thru the top hole in crank, part 4764 and back thru the bottom hole of crank. Wrap

8 complete turns down in direction shown, see Fig. 3, finish last turn on bottom of crank. Pull cable end "B" behind the hook on the wrapper assembly and thread up thru the second hole in shroud and secure with screw, part 908980-4.

4. Face shroud forward and grip cable end "A" with pliers, loosen screw, pull cable tight and secure with screw.

OPERATION

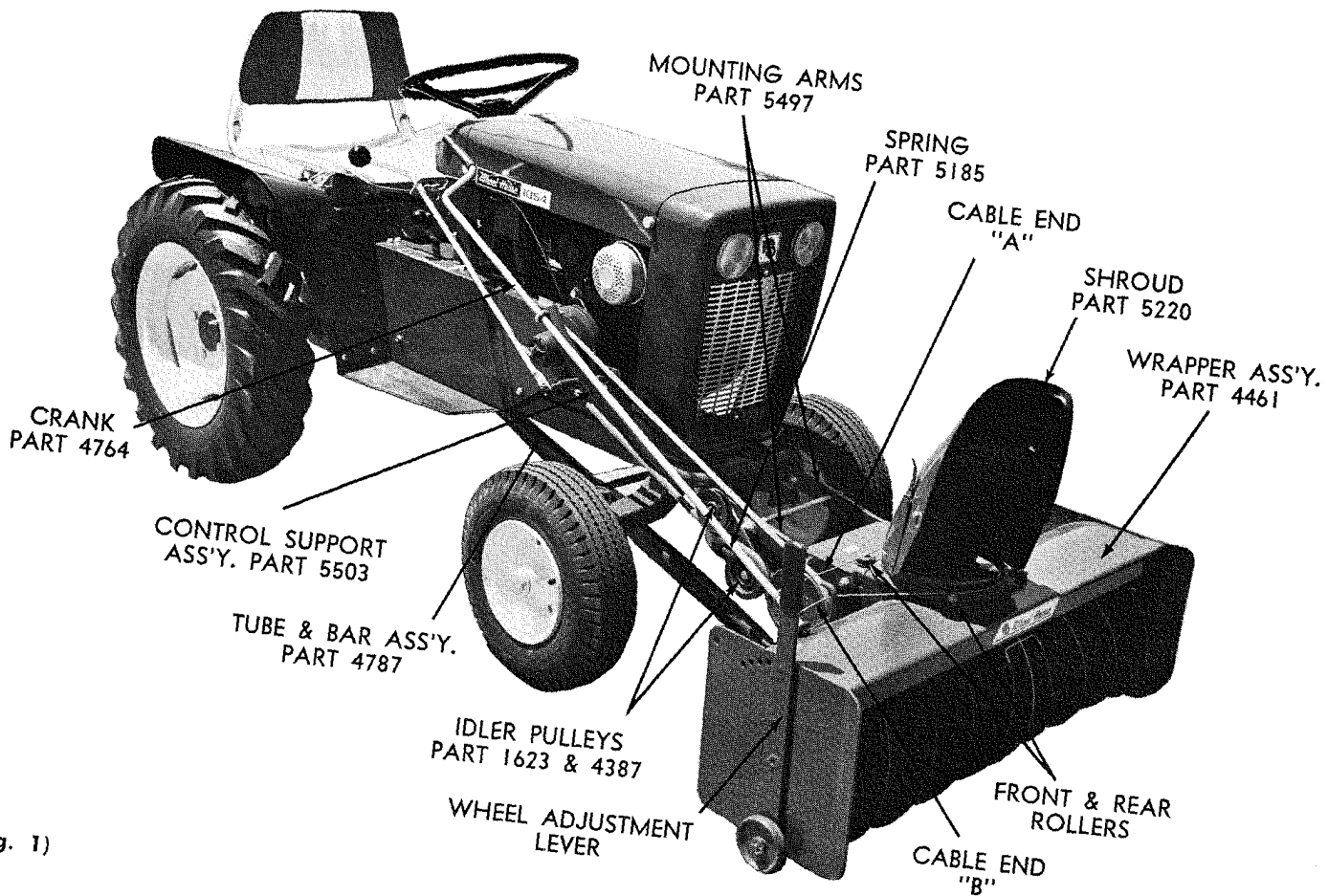
The adjustable shroud allows the operator to control the direction the snow may be thrown by turning the convenient pivot crank. The upper part of the snow shroud is adjustable to deflect the snow in an upward or downward direction depending upon conditions. There are wheels on each side for raising or lowering to prevent the Snow Thrower from catching on uneven surfaces. Under some conditions it will be necessary to coat the auger, shroud and the inside with paraffin or wax to prevent snow and ice from sticking. Best results are obtained with slow forward movement of the tractor and high auger speed, therefore under normal conditions the tractor should be operated in first gear with full throttle.

CAUTION — Engage clutch gently, do not snap into engagement. Be especially careful after the blower has set out doors after use. The auger could be frozen to the deck. Always shut off the engine before making any adjustment or lubrication.

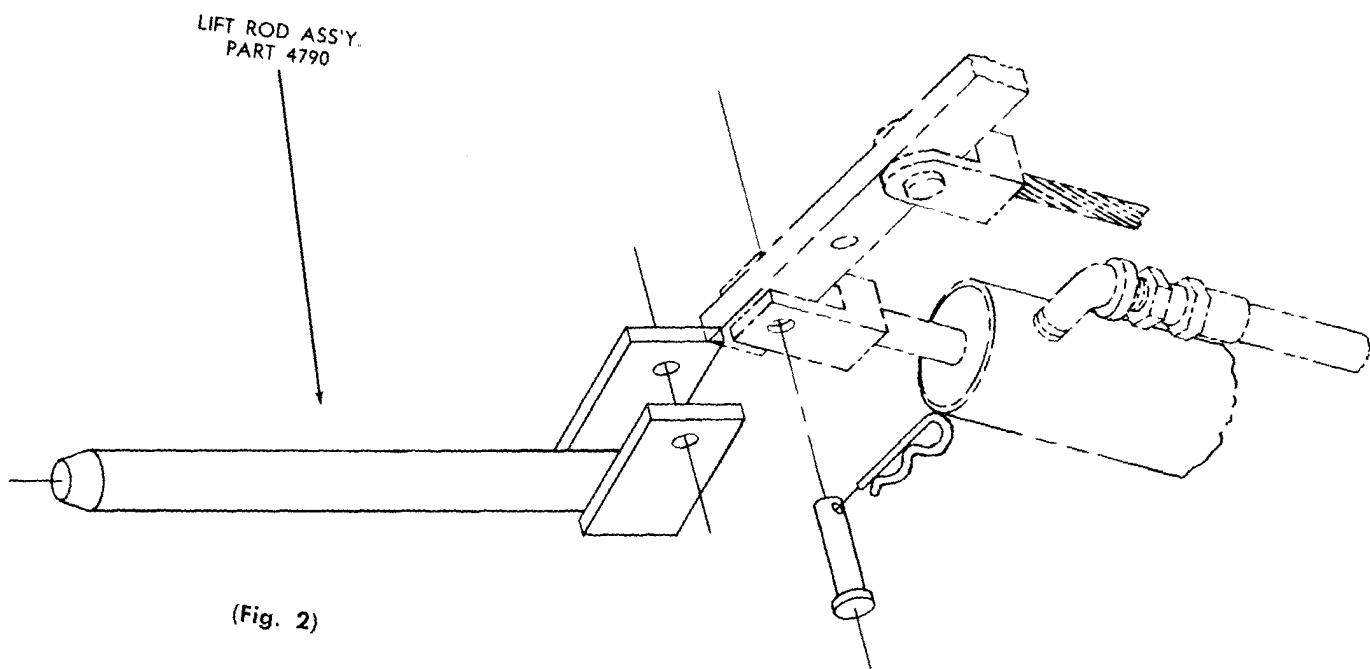
After the first hour of use recheck all bolts, nuts, and set screws — tighten securely. Check chains and belt alignment. Keep children and pets away while operating, there may be rocks or metal in the snow which could be thrown forward or out the chute. Never permit anyone to stand in front of blower when engine is running.

LUBRICATION

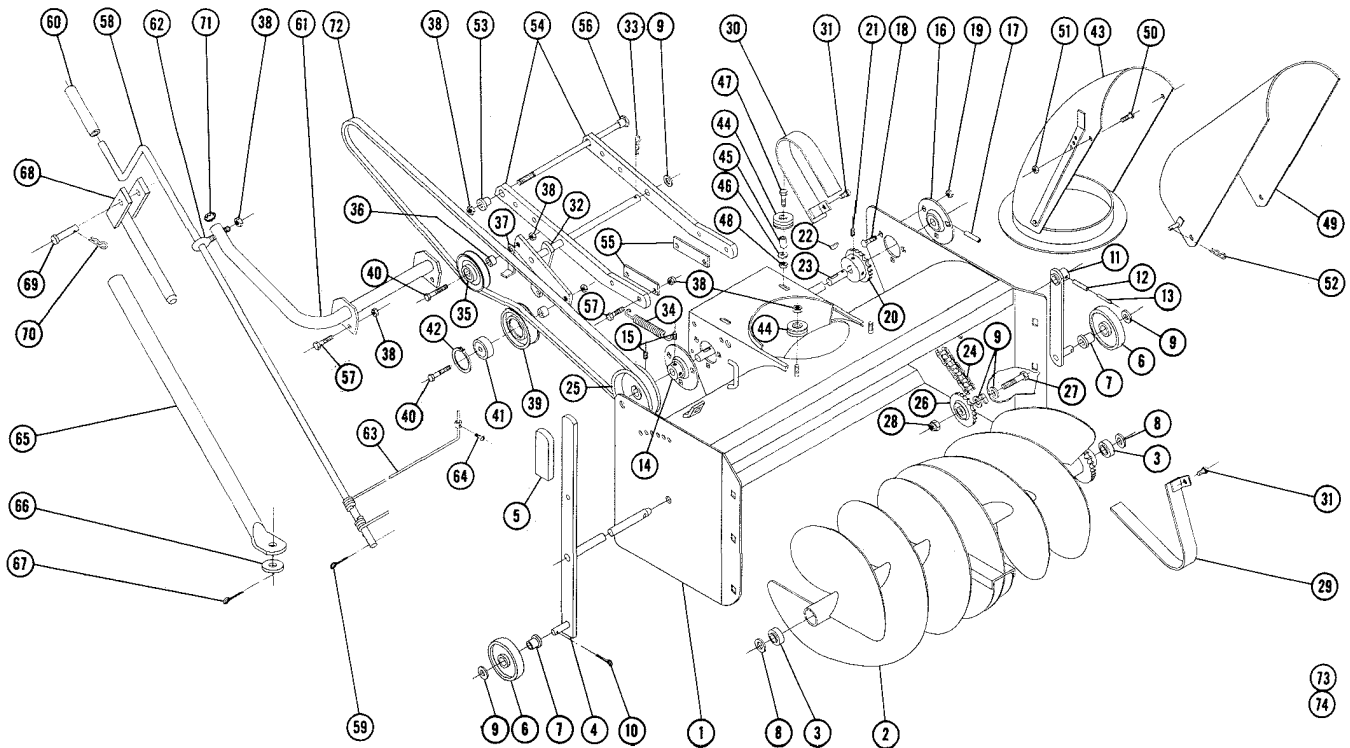
The drive chain should be oiled with a light grade of machine oil. All other bearings and movable parts should be oiled frequently. In storing the Snow Thrower, it is advisable to coat the auger with a heavy machine oil to prevent rust.



(Fig. 1)



(Fig. 2)



PARTS LIST

When ordering parts always list Part No. and name of part

Ref. No.	Part No.	Description	No. Req'd.	Ref. No.	Part No.	Description	No. Req'd.
1	4461	Ass'y. Wrapper	1	38	915663-4	Nut 3/8-16 Elastic Stop	14
2	4467	Ass'y. Auger	1	39	4387	Pulley - Idler	1
3	5493	Bearing - Ball	2	40	908037-4	Bolt - Hex. 3/8-16 x 1 3/4	2
4	4477	Ass'y. Auger Shaft	1	41	4567	Bearing - Ball	1
5	5359	Grip	1	42	S-51-137	Snap - Ring - 1 3/8 Bore	1
6	1987	Wheel	2	43	5220	Ass'y. Shroud	1
7	1974	Bushing - Nylon	2	44	1973	Roller	4
8	2090	Washer - Auger	2	45	2163	Spacer	2
9	920011-4	Washer - 1/2 S.A.E.	5	46	920007-4	Washer 1/4 S.A.E.	2
10	932016-4	Cotter Pin 1/8 x 3/4	2	47	908006-4	Bolt - Hex. 1/4-20 x 1 1/4	2
11	5157	Ass'y. Wheel Support	1	48	915111-6	Nut - Nylok 1/4-20	2
12	933215	Roll Pin 1/4 x 1 1/4	1	49	2165	Ass'y. Deflector	1
13	933173	Roll Pin 3/32 x 1 1/4	1	50	909052-4	Bolt - Round Hd. 1/4-20 x 1/2	2
14	5269	Bearing - Flanged Ball	1	51	915661-4	Nut 1/4-20 Elastic Stop	2
15	909862-6	Set Screw 3/16-18 x 3/16 Nylok	4	52	S-52-3	Hairpin Cotter	1
16	4571	Bearing - Flanged Ball	1	53	1982	Spacer	1
17	933216	Roll Pin 1/4 x 1 3/8	1	54	5497	Arm Mounting	2
18	900037-4	Bolt - Carriage 3/16-18 x 3/4	6	55	4774	Shim	2
19	915112-6	Nut - Nylok 3/16-18	6	56	4776	Ass'y. Rod & Spacer - Mt'g.	1
20	2176	Sprocket	1	57	908034-4	Bolt - Hex. 3/8-16 x 1	8
21	909848-6	Set Screw 1/4-20 x 1/4 Hex. Soc. Nylok	2	58	4764	Crank	1
22	937014	Key #9 Woodruff	2	59	932017-4	Cotter Pin 1/8 x 1	1
23	4757	Shaft - Drive	1	60	4569	Tube (Rubber)	1
24	2175	Chain	1	61	5503	Ass'y. Control Support	1
25	4793	Pulley - Drive Shaft	1	62	5498	Eye Bolt	1
26	2174	Sprocket - Idler	1	63	4795	Cable	1
27	908060-4	Bolt - Hex. 1/2-13 x 1 3/4	1	64	908980-4	Screw - Round Hd. Mach. #6-32 x 1/4	2
28	915665-4	Nut 1/2-13 Elastic Stop	1	65	4787	Ass'y. Tube & Bar	1
29	2089	Ass'y. Guard - Inner	1	66	920013-4	Washer 5/8 S.A.E.	1
30	2162	Ass'y. Guard - Outer	1	67	932034-4	Cotter Pin 3/16 x 1	1
31	1391	Screw - Sems 1/4-20 x 3/8	4	68	4790	Ass'y. Lift Rod	1
32	5500	Ass'y. Idler Arm	1	69	932999-4	Pin .500 Dia. x 1 3/4 (Clevis)	1
33	S-52-4	Hairpin Cotter	1	70	S-52-5	Hairpin Cotter	1
34	5185	Spring	1	71	935105-1	Plug - Button 1 1/16 Hole	1
35	1623	Pulley - Idler	1	72	1576	Belt - Drive 70"	1
36	2233	Spacer 1/2 Long	2	73	4498	Decal - General Caution	1
37	3760	Bracket - Belt Guide	1	74	4411	Decal - Attachment	1

Wheel Horse Service Bulletins 1961 - 1990: **#81** Issued: December 1966
ST-375 Snow Thrower Conversion to ST-376

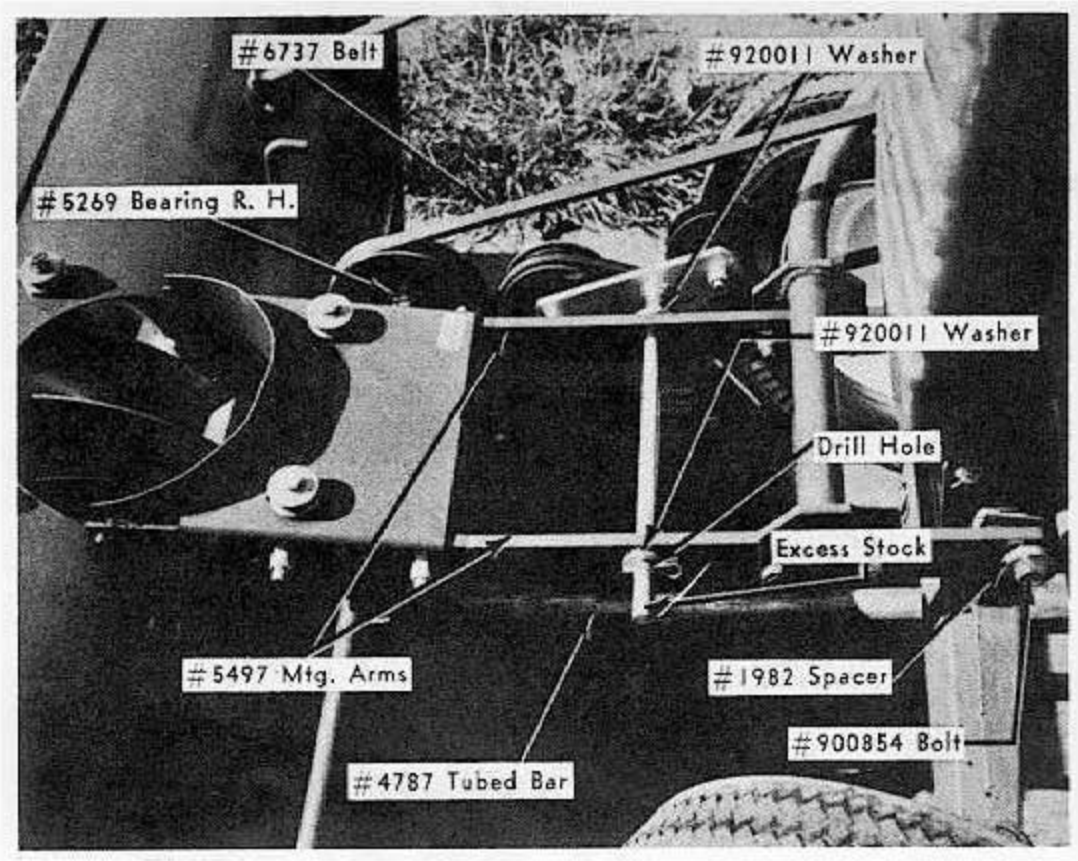
[Previous](#) [Table of Contents](#) [Next](#)

In order to install the ST-375 Snow Thrower on **long frame tractors**, we recommend the following procedure.

1. Remove snow thrower and parts from shipping carton and assemble according to ST-375 instructions with the following exceptions.
2. Remove right hand #5269 flanged bearing and reinstall on outside of wrapper assembly.
3. Discard both #4774 shims.
4. Install #5497 mounting arms on **inside** of wrapper assembly. **NOTE...** A special mounting arm #7364 is being supplied to simplify installation. If a #5497 mounting arm is used on the right hand side, sufficient stock must be removed to eliminate interference with the bearing mounting bolts.
5. Discard #4776 rod and replace with 1-#900854 square head bolt and #1982 spacer. **NOTE...** This spacer assembles directly beneath the bolt head.
6. Add 1/2" washer #920011 between right hand mounting arm #5497 and #6420 idler assembly.
7. Install #920011 washer on left end of idler assembly, locate and drill new hole for hair pin cotter installation. Cut off excess stock.
8. Remove #4787 tube and bar assembly and replace with #6427 assembly.
9. Remove #4790 lift rod assembly and replace with #1986 assembly.
10. Replace #1576 V-belt with #6737 V-belt.

ADDITIONAL PARTS REQUIRED		PARTS REMOVED	
1-7364	Mounting arm	1-4776	Rod assembly
1-1982	Spacer	2-4774	Shims
1-920011	Washer	1-4787	Tube and bar assembly
1-6427	Tube and bar assembly	1-4790	Lift assembly
1-1986	Lift assembly	1-1576	V-belt
1-6737	V-belt		
1-900854	Bolt		

Above additional parts may be ordered in kit form, #6075. List Price \$12.00. Parts removed are **not** returnable.



Wheel Horse Service Bulletins 1961 - 1990: **#356** Issued: September 1983
Self-Aligning Ball Bearing (P/N 107744) Installation - Snowthrowers

[Previous](#) [Table of Contents](#) [Next](#)

ST-326, ST-375, ST-376, STR-324,

6-0200, 6-0201, 6-0202, 6-1211, 6-2211, 6-3211,

6-6211, 6-6212, 6-6213, 6-6214, 6-6215, 6-7212,

66-42ST01, 76-42ST01, 86-42ST01, 96-42ST01

To All Dealers:

1. Subject

1.1 The current production self-aligning ball bearing, P/N 107744, is used as a substitute for bearings 4571, 100907, 101782, originally used on the above model snowthrowers. Because of a slight difference in the location of the spirol pin hole, some dealers and consumers have experienced difficulty installing it.

2. Service Action

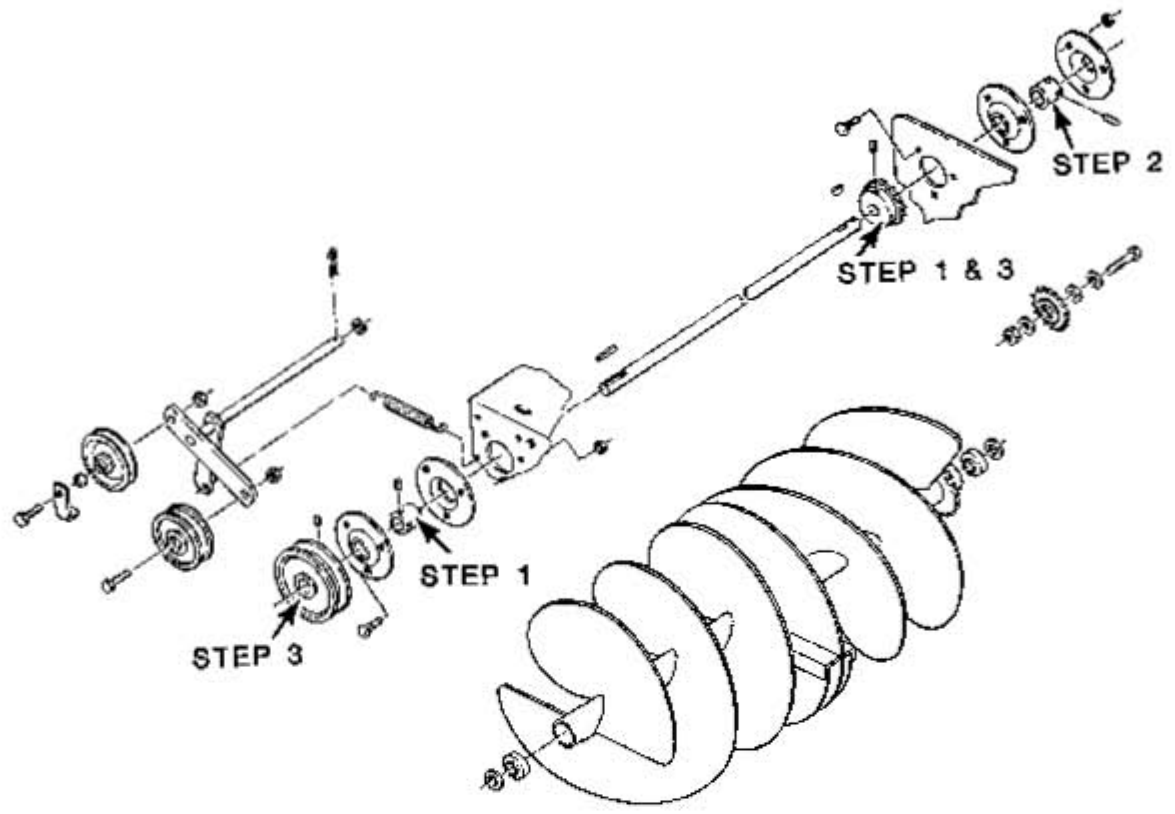
2.1 The procedure to use when replacing only this bearing follows. It is suggested that both drive shaft bearings be replaced at the same time, which eliminates the need to loosen parts simply for alignment purposes.

ROUTING	SERVICE MANAGER	SALES MANAGER	PARTS MANAGER	CHIEF MECHANIC	MECHANIC NO 1	MECHANIC NO 2	MECHANIC NO 3	MECHANIC NO 4	RETURN THIS TO
INITIAL HERE →									

Installation of P/N 107744 Bearing in

Place of Original Bearing 4571, 100907, 101782

1. Loosen Set Screws - Be sure drive shaft is free to slide inside bearing and sprocket.
2. Remove and Replace 107744 Bearing - Drive spirol pin part way in to locate drive shaft.
3. Align Drive Pulley and Sprocket as Required - Drive spirol pin completely in and tighten set screws.



Wheel Horse Service Bulletins 1961 - 1990: **#377** Issued: December 1984
Snowthrower Low Friction Discharge Chute Collar

[Previous](#) [Table of Contents](#) [Next](#)

All 37" Snowthrowers, VIN'S ST-374, ST-375, ST-376, STR-376, 6-1211, 6-6211, 6-6212, 6-0201, 6-0202 and 6-37SX01.

1980 and earlier 42" Snowthrowers, VIN'S 6-6213, 6-6214, 6-6215, 66-42ST01, 76-42ST01, 86-42ST01, 96-42ST01 and 06-42ST01

1. Subject

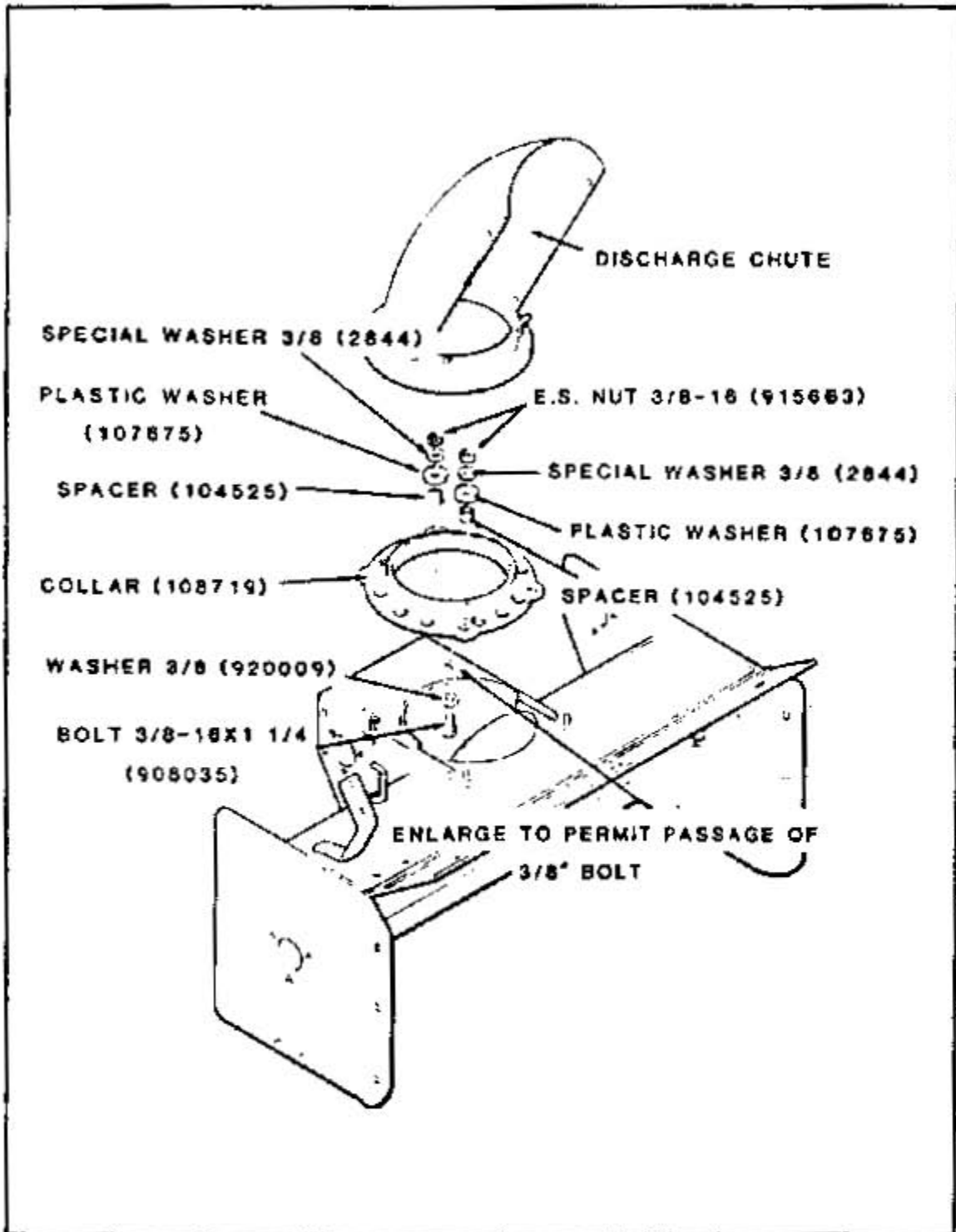
1.1 To convert older snowthrowers to the current production Low Friction Discharge Chute Collar, obtain and install parts as instructed below.

1.2 New parts necessary:

(1)	108719	Collar
(4)	2844	Special Washer 3/8
(2)	920009	Washer 3/8
(4)	107675	Plastic Washer
(4)	104525	Spacer
(2)	908035	Bolt 3/8-16 x 1-1/4
(2)	915663	E.S. Nut 3/8-16

2. Service Action

2.1 Disassemble and remove Discharge Chute, Rollers and hardware (Fig.1).



(Fig. 1)

2.2 Install new Collar, Discharge Chute and hardware as shown in Figure 1. Make sure that the Chute Flange is properly located between the Plastic Washer and the Collar. DO NOT OVER-

TIGHTEN NUTS AND BOLTS. Also, check that the Directional Control Cable is properly returned to its correct position: refer to snowthrower owner's manual.

ROUTING	SERVICE MANAGER	SALES MANAGER	PARTS MANAGER	CHIEF MECHANIC	MECHANIC NO 1	MECHANIC NO 2	MECHANIC NO 3	MECHANIC NO 4	RETURN THIS TO
INITIAL HERE									

>