

PARTS LIST AND INSTRUCTIONS

48" ROTARY MOWER

FACTORY ORDER NUMBER 5-1221

FOR 1973 18 HP AUTOMATIC & 1974-75 D SERIES TRACTORS

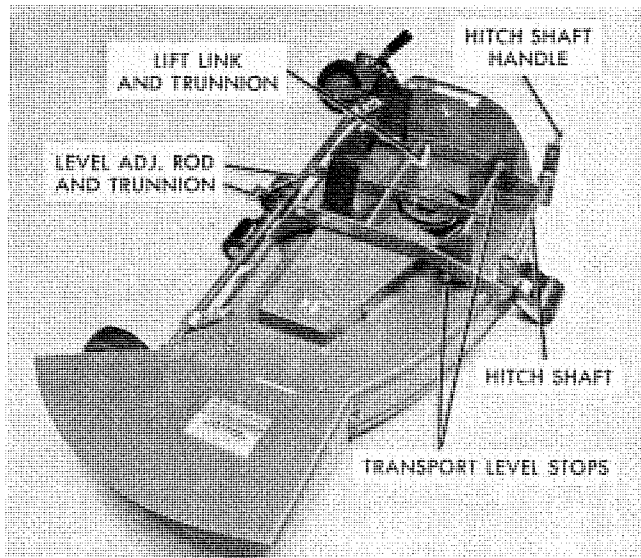


Fig. 1 - 48" Mower Assembly

HITCH ADJUSTER LINK

If the Hitch Adjuster Link and related parts are not attached to the tractor they will need to be assembled and installed on the tractor. Fig. 2 shows the assembly as located on the tractor under the left foot rest. Refer to Fig. 2 and the parts drawing.

1. Install and center one of the roll pins in the adjustment screw in the hole nearest the thread.
2. Screw the adjustment screw into the adjustment link approximately half-way.
3. Install the detent spring on the unthreaded end of the shaft with the long side of the spring against the rollpin.

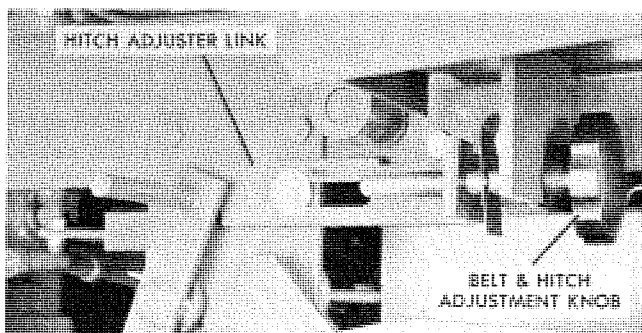


Fig. 2 - Hitch Adjuster Link

4. Install the adjuster link, roll pin and screw assembly by inserting the unthreaded end through the fender bracket and fasten the link to the hitch plate with the $\frac{3}{8}$ -16 x $1\frac{1}{4}$ bolt inserted from the outside with flat washer next to the bolt head and the spacer through the slot in the link. The other flat washer goes next to the nut at the inside of the hitch plate.

5. Install the adjusting knob, line up the roll pin holes and install roll pin.

6. Lubricate screw thread and check operation.

MOWER INSTALLATION

1. Place tractor in neutral, push down on the brake pedal and engage the parking brake.

2. Place the mower at the right side of the tractor with the gage wheels set in the lowest position.

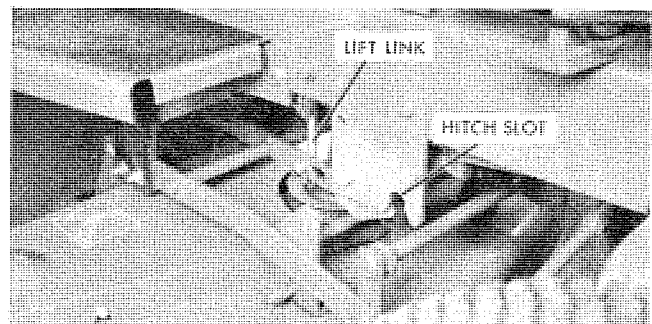


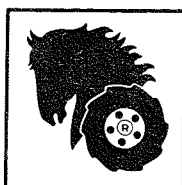
Fig. 3 - Mower Installation - Right Side

3. Check the mower lift rod for adjustment. Adjust the trunnion as required to obtain a distance of $3\frac{3}{8}$ " between the center of the trunnion and the center of the adjustment rod hook. See Fig. 3. Slide the mower under the tractor. Center and connect the lift link trunnion in the end hole of the tractor lift arm. Retain with Hairpin Cotter furnished.

4. From the left side, open the mid hitch latch and align mower shaft side to side with the hitch slots.

5. Adjust Hitch Adjuster Link by turning the Belt Adjustment Knob until the adjuster link slot lines up directly over the hitch slot. See Fig. 4.

6. Start engine and, using the hydraulic lift, raise mower and guide the lift shaft and lift shaft pin into their respective slots. See Fig. 4. (This can easily be done by the operator kneeling at the left side of the tractor using the right hand to operate the lift lever and the left hand to guide the hitch shaft assembly.) Lock the hitch latch securely to hold the mower in place. Shut off engine.



WHEEL HORSE

lawn & garden tractors

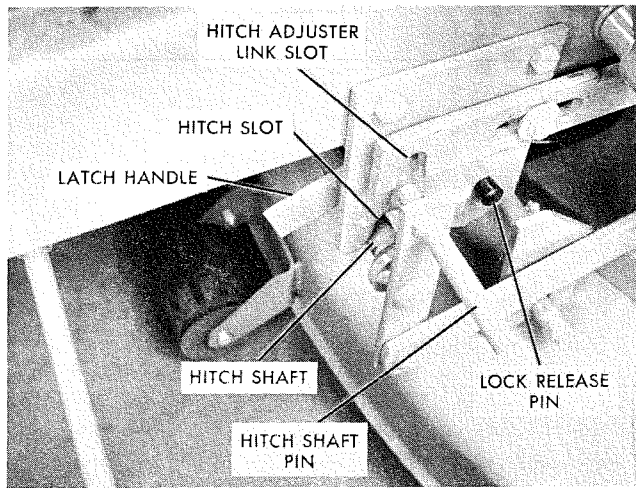


Fig. 4 — Mower Installation As Seen from Left Side

7. Turn the Belt Adjustment Knob all the way clockwise which will move the mower forward for belt installation. See Fig. 2.

8. Remove the tractor grille.

9. Install one end of the mower drive belt through the pulley and shield assembly and around the mower pulley. Install the other end of belt in the front groove of the PTO Pulley. See Fig. 6. Make sure the V-Belt strands fit properly in all pulley grooves.

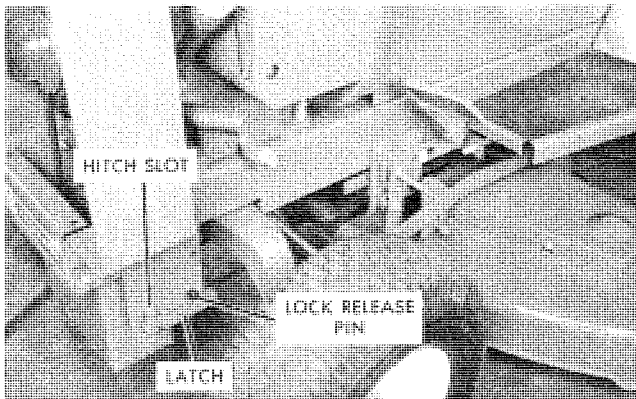


Fig. 5

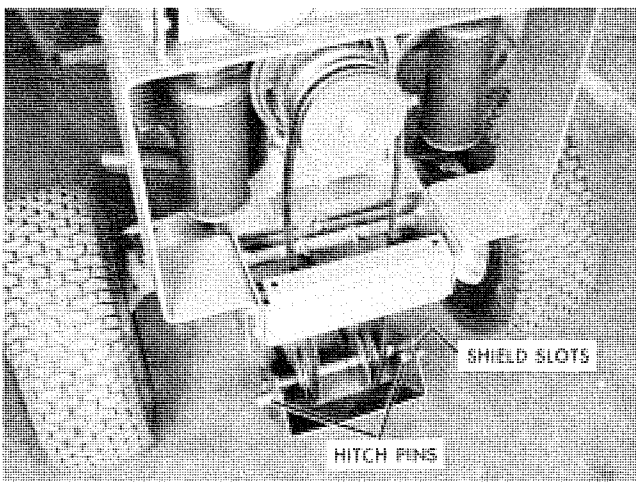


Fig. 6 — Belt Installation — Pulley Shield Removed

10. Open front hitch latch and hold open with the locking spacer. Pulling forward and upward insert pulley shield assembly into hitch making sure to seat the shield slots around the latch shaft and the shield pins into the hitch slots. Lock the hitch latch and re-check to see that the assembly is aligned and locked properly. See Fig. 6.

11. Install the tractor grille assembly.

12. Adjust the drive belt tension by turning the adjustment knob counter clockwise. Proper belt tension when measured midpoint between the mower pulley and the idlers with a belt tension gage is 80 lbs. If a belt gage is not available the belt may be forced together between the thumb and fingers. It should take considerable effort to force the two belt strands to within 1" of each other with one hand. Check belt operation. If the belt whips excessively during operation it is an indication that it is too loose.

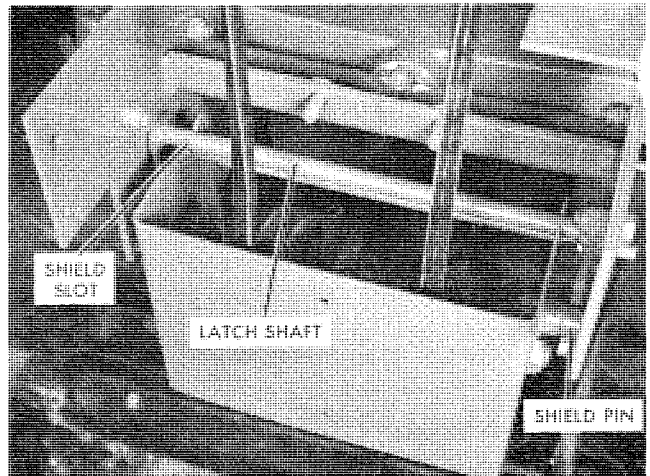


Fig. 7 — Belt Installation — Pulley Shield Installed

MOWER REMOVAL

1. Place tractor in neutral and engage parking brake.

2. Turn belt adjusting knob fully clockwise to loosen drive belt. See Fig. 2.

3. Remove tractor grille.

4. Push front hitch latch release pin and open front latch. See Fig. 5.

5. Remove front pulley and shield assembly from hitch.

6. Remove belt from the front PTO pulley and from the mower pulley.

7. Set mower gage wheels in the lowest position.

8. Adjust Hitch Adjuster Link by turning the belt adjustment knob until the adjuster link slot lines up directly over the hitch slot. See Fig. 4.

9. Push mid hitch latch release pin and open latch. See Fig. 4.

10. Lower mower with the hydraulic lift. Pushing lift lever down will lower mower without starting engine.

11. Remove hairpin and disconnect trunnion from tractor lift arm. See Fig. 3.

12. Remove mower by sliding it to the right side.

OPERATION

1. Lift the mower with the hydraulic lift lever to remove weight of the mower from the gage wheels. **Note:** Never stand on the mower.

2. Move the height control to the hole on the quadrant corresponding to the desired cutting height. The recommended cutting height is two to three inches.

3. Disengage the power take-off clutch and lower the mower before starting the tractor engine.

4. Start the engine and engage the power take-off clutch. For best cutting results on average level lawns, operate the engine at full throttle while controlling the ground speed with the speed control lever. Uneven cutting often results from excessive ground speed. To correct, reduce ground speed with transmission while maintaining full throttle.

5. To mow extra tall grass, raise the mower to the highest position for the first cut using the lowest drive speed. Then recut to normal height.

MAINTENANCE

Lubrication

The gage wheels should be lubricated with a pressure grease gun using automotive chassis lubricant after every 8 to 10 hours of operation. All pulleys and spindle assemblies are lubricated at the factory and require no further lubrication.

IMPORTANT — Clean the underside of the mower deck frequently to prevent the accumulation of matted clippings which seriously impair the mower's ability to lift grass blades upright into cutting position and to discharge clippings evenly.

Blade Maintenance:

Invert the mower. Remove the three blade attaching bolts and special washers. Lift the blades off the spindles.

File or grind the blades evenly, taking care to retain the original cutting edge angle and blade balance. Reinstall the blades, making sure the pins protruding from the spindle cups engage the blade properly. The side of the blade with the lift area (turned up section) must be installed facing the mower deck. Tighten the blade attaching screws to a torque of 30 Ft./Lbs. These screws, Part No. 908033 should be replaced after every two or three times they are removed and reinstalled.

REPLACEMENT BELTS

Be sure to purchase genuine Wheel Horse belts for replacement purposes as these belts are designed specifically for each application.

MOWER DRIVE BELT REPLACEMENT

1. Turn belt adjustment knob all the way clockwise which will move the mower forward. See Fig. 2.

2. Remove the tractor grille.

3. Push front hitch latch release pin and open front latch. See Fig. 5.

4. Remove pulley and shield assembly from hitch. See Fig. 6.

5. Remove belt from the PTO pulley, the pulley and shield assembly, and the mower pulley.

6. Install one end of the new belt through the pulley and shield assembly and around the mower pulley. Install the other end in the front groove of

the PTO pulley. Make sure the V-Belt strands fit properly in all pulley grooves.

7. Check the front hitch latch to make sure it is open and, pulling forward and upward, insert the pulley shield assembly into hitch. Make sure to seat the shield slots around the latch shaft and the shield pins into the hitch slots. Lock the hitch latch and recheck to see that the assembly is aligned and locked properly. See Fig. 7.

8. Install the tractor grille assembly.

9. Adjust the drive belt tension by turning the adjustment knob counter clockwise. Proper belt tension when measured midpoint between the mower pulley and the idlers with a belt tension gage is 80 lbs. If a belt gage is not available the belt may be forced together between the thumb and fingers. It should take considerable effort to force the two belt strands to within 1" of each other with one hand. Check belt operation. If the belt whips excessively during operation it is an indication that it is too loose.

SPINDLE BELT REPLACEMENT

Remove the mower from the tractor.

Remove the level adjustment rod from the rear of the adjustment bar.

Remove the bolts, nuts, and spacers that fasten the two draft bars to the rear brackets.

Swing the draft and leveler bars forward out of the way and remove the belt cover nuts or bolts and lift the cover off the mower deck.

Remove the old belt and install the new belt in accordance with the belt diagram on the belt cover. Make sure the pulley area is clean and the idler slide bar is free. Examine the spring to make sure it is in good shape and in place.

Reinstall the belt cover and fasten the draft bars to the brackets making sure the spacers are seated correctly.

Reinstall the level adjustment rod and secure with the hairpin cotter.

CHECKING MOWER LEVEL

For optimum efficiency the level of the mower should be checked at the time of initial installation and periodically as a check to see if alignment is maintained.

Place gage wheel lever pin in the center hole of the quadrant making sure the lift lever is released and the tractor is on a good level floor with the tires inflated properly.

Place a level on a flat area of the mower deck from front to back.

Adjust until the deck is level from front to back with the adjustment nut on the level adjustment rod which connects the back of the lift bar to the gage wheel support lever, **then back the nut off one (1) complete turn** which will lower the front of the mower slightly. **Note: The trunnion must always be installed in the hole nearest to the gage wheel support shaft.**

TRANSPORT LEVEL STOP ADJUSTMENT

For normal operation the level stops should be adjusted so that the carriage bolt heads are set at the bottom of the bracket slots.

Note: If the mower does not cut level in the transport position the level stops may be adjusted by moving them in their bracket slots as required.

PARTS LIST FOR 48" ROTARY MOWER

FACTORY ORDER NUMBER 5-1221

Parts available only through Authorized Dealers.

When ordering parts always list Part No. and Description.

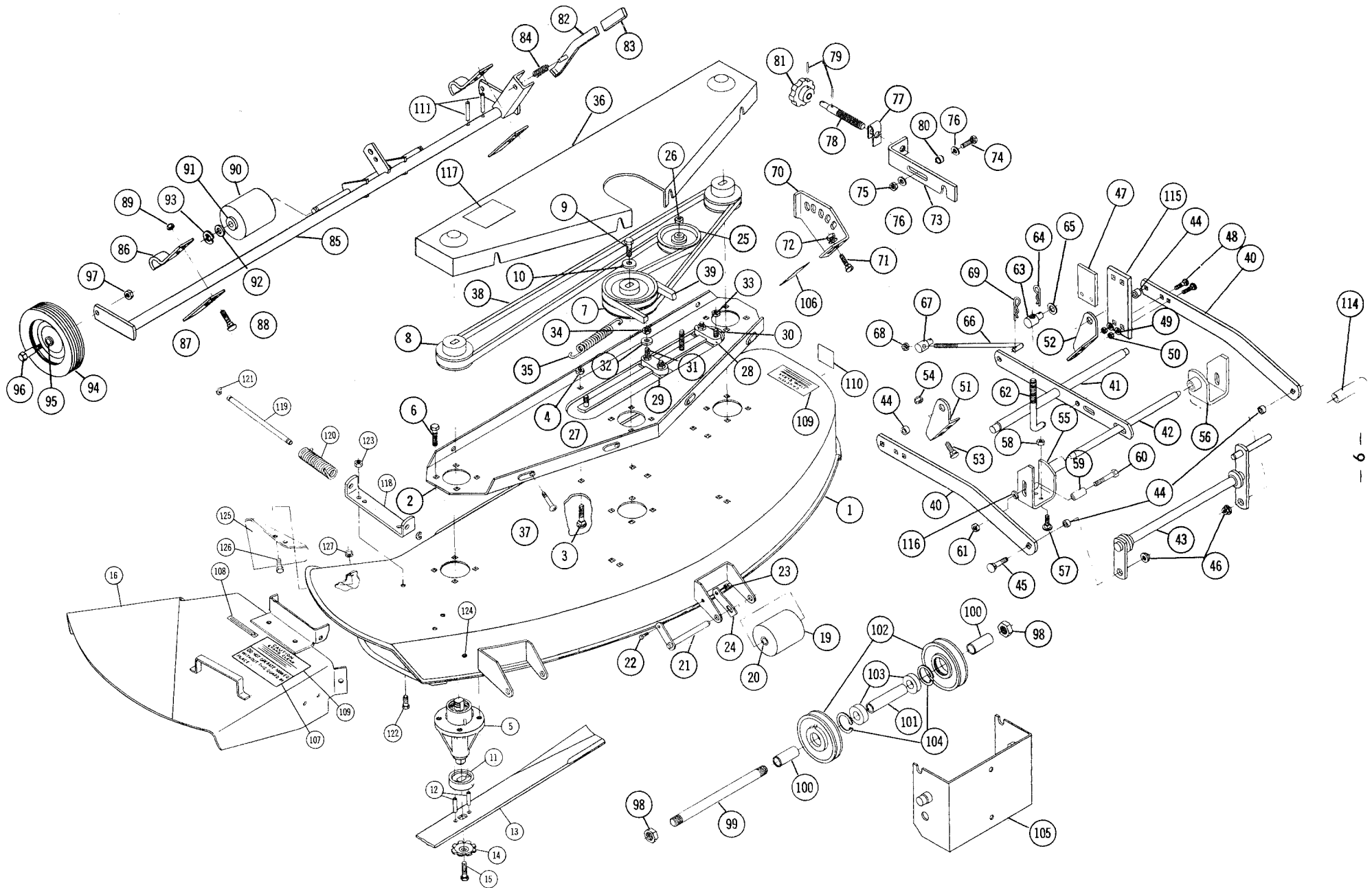
(Specifications subject to change without notice.)

ITEM NO.	PART NO.	DESCRIPTION	NO. REQ'D.
1	104773	Deck	1
2	6759	Support	1
3	900062	Bolt - $\frac{3}{8}$ -16 x $\frac{3}{4}$ Carriage	1
4	915663	Nut - $\frac{3}{8}$ -16 E.S.	1
5	104891	Spindle Assembly	3
6	908032	Bolt - $\frac{3}{8}$ -16 x $\frac{3}{4}$ Nylok	12
7	6756	Pulley - Center	1
8	6757	Pulley - Right & Left	2
9	908032	Bolt - $\frac{3}{8}$ -16 x $\frac{3}{4}$ Nylok	3
10	2844	Washer - Special	3
11	104374	Cup - Spindle	3
12	933210	Spiral Pin $\frac{1}{4}$ x $\frac{5}{8}$	6
13	100202	3-Blade Kit, 16" Blades	1
14	1336	Washer - Dome	3
15	908033	Bolt - $\frac{5}{8}$ -16 x $\frac{7}{8}$	3
16	104782	Chute - Extension	1
19	5240	Roller Assembly	2
20	100284	Bushing	2
21	102770	Shaft - Roller	2
22	908002	Bolt - $\frac{1}{4}$ -20 x $\frac{5}{8}$	2
23	915111	Nut - $\frac{1}{4}$ -20 Eslok	2
24	102773	Spring - Roller Stop	2
25	6769	Pulley - Flat Idler	1
26	915113	Nut - $\frac{3}{8}$ -16 E.S.	1
27	6715	Idler Support Bar	1
28	6720	Block - Slide	2
29	6748	Slide	2
30	900039	Bolt - $\frac{5}{16}$ -18 x $1\frac{1}{4}$	3
31	900040	Bolt - $\frac{5}{16}$ -18 x $1\frac{1}{2}$	1
32	920008	Washer - $\frac{5}{16}$ SAE	5
33	915662	Nut - $\frac{5}{16}$ -18 E.S.	3
34	915112	Nut - $\frac{5}{16}$ -18 Eslok	2
35	6651	Spring	1
36	6770	Cover - Belt	1
37	960150	Screw - $\frac{1}{4}$ -20 x $\frac{3}{8}$	6
38	1594	Belt - 107"	1
39	102868	Belt - 105.5"	1
40	101777	Draft Bar	2
41	104769	Leveler Assembly	1
42	103360	Shaft	1
43	100980	Hitch Assy.	1
44	102704	Spacer	4
45	900063	Bolt - $\frac{3}{8}$ -16 x 1 Carriage	4
46	102809	Nut - $\frac{3}{8}$ -16 MF Two-way Lock	4
47	102322	Bumper - Rubber	2
48	900038	Bolt - $\frac{5}{16}$ -18 x 1 Carriage	8
49	920038	Washer - $\frac{5}{16}$ SAE	4
50	915112	Nut - $\frac{5}{16}$ -18 Eslok	8
51	101776	Bracket - RH - Rear	1
52	101775	Bracket - LH - Rear	1
53	900062	Bolt - $\frac{3}{8}$ -16 x $\frac{3}{4}$ Carriage	4
54	915113	Nut - $\frac{3}{8}$ -16 Eslok	4
55	103356	Bracket - RH Front	1
56	103357	Bracket - LH - Front	1
57	900062	Bolt - $\frac{3}{8}$ -16 x $\frac{3}{4}$ Carriage	4
58	915113	Nut - $\frac{3}{8}$ -16 Eslok	4
59	6595	Spacer - Level Stop	2
60	908049	Bolt - $\frac{7}{16}$ -14 x $1\frac{3}{4}$	2
61	915664	Nut - $\frac{7}{16}$ -14 E.S.	2
62	102029	Rod - Lift	1
63	8870	Trunnion	1
64	933505	Hairpin Cotter	2

**PARTS LIST FOR 48" ROTARY MOWER
FACTORY ORDER NUMBER 5-1221**

Parts available only through Authorized Dealers.
When ordering parts always list Part No. and Description.
(Specifications subject to change without notice.)

ITEM NO.	PART NO.	DESCRIPTION	NO. REQ'D.
65	920011	Washer — 1/2 SAE	1
66	102035	Rod — Leveler	1
67	6739	Trunnion	1
68	915663	Nut — 3/8-16 E.S.	1
69	933504	Hairpin Cotter	2
70	102655	Quadrant	1
71	900063	Bolt — 3/8-16 x 1 Carriage	2
72	915663	Nut — 3/8-16 E.S.	2
73	100996	Link — Hitch Adjustment	1
74	908035	Bolt — 3/8-16 x 1 1/4	1
75	915113	Nut — 3/8-16 Eslok	1
76	920039	Washer — 3/8 SAE	2
77	102861	Spring — Detent	1
78	100983	Screw — Hitch Adjustment	1
79	933156	Pin — Sprol 1/8 x 1	2
80	100283	Spacer	1
81	101851	Knob — Adjustment	1
82	102431	Lever Assembly	1
83	102597	Grip	1
84	101853	Spring	1
85	104767	Support — Gage Wheel	1
86	102615	Bracket — Pivot	2
87	102618	Bar	2
88	900064	Bolt — 3/8-16 x 1 1/4 Carriage	4
89	915663	Nut — 3/8-16 E.S.	2
90	5240	Roller Assembly	3
91	100234	Bushings	6
92	920011	Washer — 1/2 SAE	3
93	5701	"E" Ring 1/2	3
	920211	Special Washer	2
94	103665	Wheel — 6 x 1.75	2
95	5306	Bearing	4
96	5188	Bolt — Shoulder	2
97	915113	Nut — 3/8-16 Eslok	2
98	915640	Nut — 3/4-16 Jam E.S.	2
99	102264	Shaft — Front Pulley	1
100	102263	Spacer	2
101	104192	Spacer — (Center)	1
102	104143	Pulley — Idler	2
103	104070	Bearing	2
104	936028	Snap Ring	2
105	102260	Shield Assembly	1
106	102601	Decal — Height Adjustment	1
107	104356	Decal — Mower Guard	1
108	104903	Decal — Edge of Cut	1
109	4570	Decal — Caution	2
110	102832	Decal — Emblem (Wheel Horse)	1
111	933190	Pin — Spirol 3/16 x 1 1/4	2
114	9038	Grip	1
115	103361	Plate	2
116	920010	Washer 7/16	2
117	104873	Decal Belt Instr.	1
118	104774	Deck Bracket	1
119	104775	Rod	1
120	104777	Spring	1
121	MW4564	E-Ring, 3/8 Dia.	2
122	908017	Bolt, Hex 5/16-18 x 3/4	2
123	915112	Nut, 5/16-18 Eslok	2
124	104870	Bumper Plug	1
125	104778	Chute Guard	1
126	908016	Bolt, Hex 5/16-18 x 5/8	2
127	915112	Nut, 5/16-18 Eslok	2



EXPLODED VIEW

GENERAL SAFETY SUGGESTIONS

Recommended by Outdoor Power Equipment Institute

SAFE OPERATION PRACTICES — RIDING VEHICLES

1. Know the controls and how to stop quickly — **READ THE OWNER'S MANUAL.**
2. Do not allow children to operate vehicle. Do not allow adults to operate it without proper instruction.
3. Do not carry passengers. **Keep children and pets a safe distance away.**
4. Clear work area of objects which might be picked up and thrown.
5. Disengage all attachment clutches and shift into neutral before attempting to start engine (motor).
6. Disengage power to attachments and stop engine (motor) before leaving operator position.
7. Disengage power to attachment(s) and stop engine (motor) before making any repairs or adjustments.
8. Disengage power to attachments when transporting or not in use.
9. Take all possible precautions when leaving vehicle unattended; such as disengaging power-take-off, lowering attachments, shifting into neutral, setting parking brake, stopping engine and removing key.
10. Do not stop or start suddenly when going uphill or downhill. Mow up and down the face of steep slopes; never across the face.
11. Reduce speed on slopes and in sharp turns to prevent tipping or loss of control. Exercise extreme caution when changing direction on slopes.
12. Stay alert for holes in terrain and other hidden hazards.
13. Use care when pulling loads or using heavy equipment.
 - a. Use only approved drawbar hitch points.
 - b. Limit loads to those you can safely control.
 - c. Do not turn sharply. Use care when backing.
 - d. Use counterweight(s) or wheel weights when suggested in owner's manual.
14. Watch out for traffic when crossing or near roadways.
15. When using any attachments never direct discharge of material toward bystanders nor allow anyone near vehicle while in operation.
16. Handle gasoline with care — it is highly flammable.
 - A. Use approved gasoline container. Place container out of the reach of children.
 - B. Use gasoline only as a fuel — never as a cleaner. Never remove cap or add gasoline to a running or hot engine or fill fuel tank indoors. Wipe up spilled gasoline. And positively **NO SMOKING.**
 - C. Open doors if engine is run in garage — exhaust fumes are dangerous. Do not run engine (motor) indoors.
17. Keep vehicle and attachments in good operating condition and keep safety devices in place.
18. Keep all nuts, bolts, and screws tight to be sure equipment is in safe working condition.
19. Never store equipment with gasoline in the tank inside a building where fumes may reach an open flame or spark.
20. Allow engine to cool before storing in any enclosure.
21. To reduce fire hazard keep engine free of grass, leaves or excessive grease.
22. Vehicle and attachments should be stopped and inspected for damage after striking a foreign object and the damage should be repaired before restarting and operating the equipment.
23. Do not change engine governor settings or over-speed engine.
24. When using vehicle with mower:
 - (1) Mow only in daylight or in good artificial light.
 - (2) Never make a cutting height adjustment while engine (motor) is running if operator must dismount to do so.
 - (3) Shut engine (motor) off when unclogging chute.
 - (4) Check blade mounting bolts for proper tightness at frequent intervals.
25. Check grass catcher bags frequently for wear or deterioration. Replace with new bags for safety protection.



CAUTION



1. KEEP ALL SHIELDS IN PLACE.
2. BEFORE LEAVING OPERATOR'S POSITION:
 - A. SHIFT TRANSMISSION TO NEUTRAL
 - B. SET PARKING BRAKE
 - C. SHUT OFF MOTORS
 - D. REMOVE IGNITION KEY.
3. KEEP PEOPLE AND PETS A SAFE DISTANCE AWAY FROM MACHINE.
4. WAIT FOR ALL MOVEMENT TO STOP BEFORE SERVICING MACHINE.

