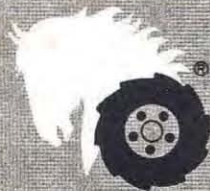


## PARTS LIST AND INSTRUCTIONS



*Wheel Horse*

WHEELHORSE PRODUCTS, INC. • SOUTH BEND IND.

## ROTARY MOWER RL-426

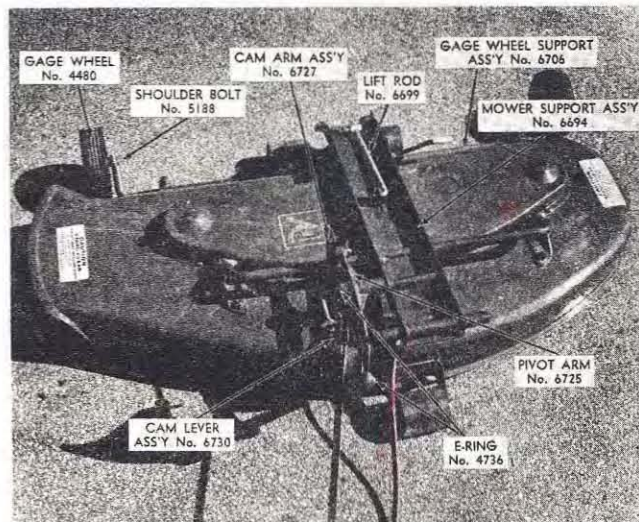


### ASSEMBLY

The PT-6 power take-off unit must be installed on tractor before the mower is installed.

This mower is designed to fit on 1056, 1076, and 1276 tractors only.

Remove mower from carton. Install the right hand mounting plate, Part No. 6712 to the right hand tractor frame rail, using support mounting plate, Part No. 6713, and aligning the rear hole with the fifth hole in the frame. Add hex head bolt  $\frac{3}{8}$ -16 x 1, Part No. 908034-4 thru front plate hole and secure with  $\frac{3}{8}$ -16 stop nut, Part No. 915663-4.



Install the left hand mounting plate, Part No. 4497 to the left hand frame rail after inserting latch assembly, Part No. 6710 (with cut-out toward rear) in hole provided. Fasten left hand mounting plate to frame using two hex head bolts  $\frac{3}{8}$ -16 x 1, Part No. 908034-4 thru plate and third and fifth hole in frame. Secure with  $\frac{3}{8}$ -16 stop nuts, Part No. 915663-4. Install the cam lever, Part No. 6730 to the pivot arm, Part No. 6725 and secure with E-Ring, Part No. 4736. Install lift rod, Part No. 6699 to mower support, Part No. 6694 and rotate the rod to the rear of the mower, and secure with hair pin cotter, Part No. 933504-4.

Remove right hand footrest, Part No. 4421 from tractor. Install cam arm assembly, Part No. 6727 to tractor footrest bar with pin toward the tractor frame. Replace footrest on the tractor and secure. Install gage wheels, Part No. 4480 with shoulder bolt, Part No. 5188 to gage wheel support, Part No. 6766 and secure with  $\frac{3}{8}$ -16 jam nut, Part No. 915236-4. Turn the tractor wheels all the way to the left. Place the mower at the right hand side of the tractor, with the left side of the mower between the front and rear wheels. Slide the mower under the tractor and rotate the gage wheel, Part No. 6706 to the highest cut position. With the tractor lift lever in the lowered position, install lift rod, Part No. 6699 into end hole of tractor lift lever from left side. Secure with hair pin cotter, Part No. 933504-4. Raise the mower with the lift lever, until the support, Part No. 6694, comes up into the slot in the mounting plates and close the latch. Secure latch in closed position by using hair pin cotter, Part No. 933512 thru hole in lift plate, Part No. 4497.

There are two holes in this plate for the hair pin cotter. One locks the latch in place, the other hole is used to hold the latch up when the mower is off the tractor.

Remove PT-6 clutch rod by removing hair pin cotter, Part No. 933506-4, slide the clutch rod, Part No. 4355 toward the rear of the tractor and install the drive belt, Part No. 6737. Replace clutch rod and hair pin. Refer to decal on mower cover for belt arrangement. **CAUTION:** The top end of the cam lever, Part No. 6730 must be located in the groove of the bushing,

Part No. 6714. This bushing is a guide for the cam lever. Rotate the pivot arm, Part No. 6725 up or down in order to install the cam arm, Part No. 6727 by sliding it thru the hole in the pivot arm. Secure with hair pin cotter, Part No. 933504-4. Adjust drive belt tension by backing off the  $\frac{3}{8}$ -16 stop nut, Part No. 915663-4 about one revolution and turning the adjusting nut, Part No. 6736 to the proper tension. After adjusting belt, retighten the  $\frac{3}{8}$ -16 stop nut.

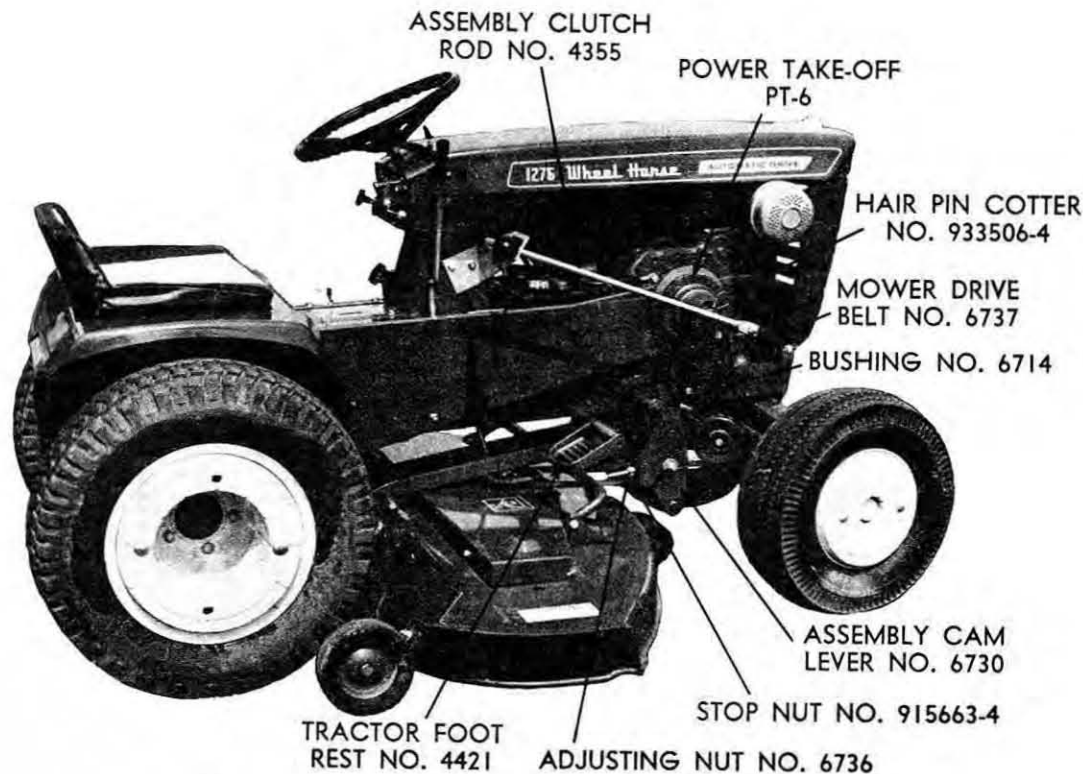
When the mower is raised to the transport position the support channel will be touching the tractor frame.

## OPERATION

1. To adjust the height of cut, lift mower with tractor lift lever to remove weight of mower from gage wheels.
2. Never stand on mower when it is in the raised position.
3. When blades become dull, remove and regrind **Caution: Sharpen evenly on both ends to maintain blade balance. Inspect blades frequently, (especially after hitting an object) tighten if necessary.**
4. For best cutting, tractor should be operated at full throttle in 2nd gear, or approximately  $3\frac{1}{2}$  MPH. In extremely heavy cutting it may be necessary to use 1st gear, about  $1\frac{1}{2}$  MPH.
5. When mowing extra tall grass, raise the mower to the travel position and cut. Then recut at normal height. Don't cut grass too short. The recommended height is 2 to 3 inches.

## LUBRICATION

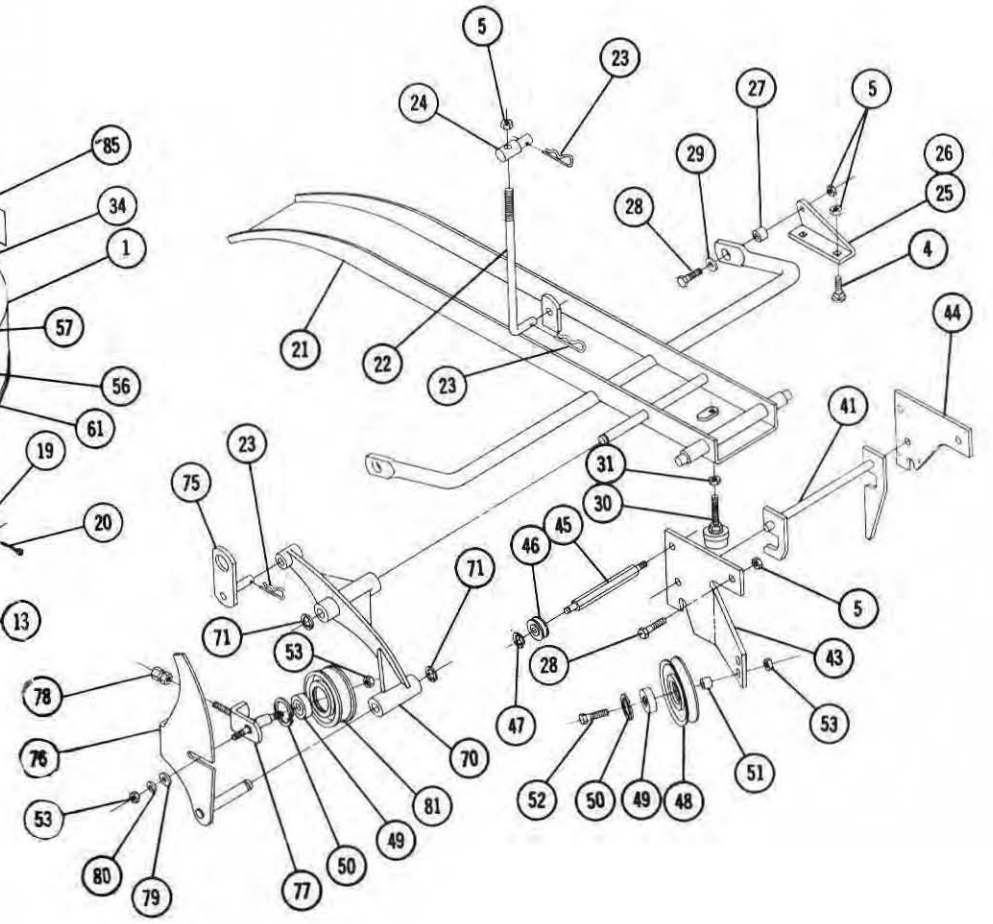
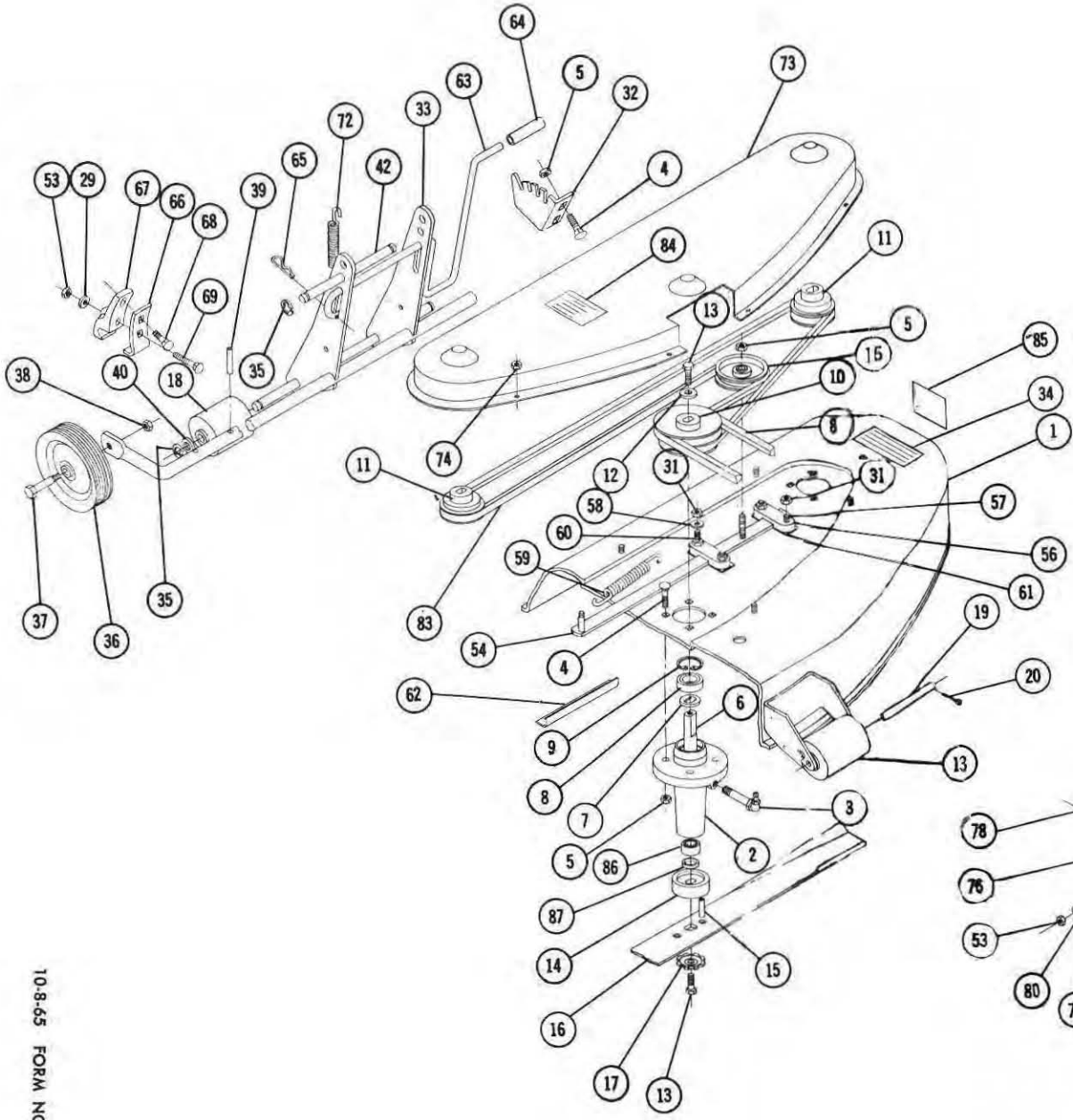
Each blade spindle has a grease fitting visible through a hole in the top of the deck. Spindles have been greased at the factory, but should be greased again before operation and after every 50 hours of use. A regular lubricating pressure gun can be used for this.



## PARTS LIST FOR RL-426 ROTARY MOWER

When ordering parts always list Part No. and name of part.

No. Req'd.	Part No.	Description	No. Req'd.	Item No.	Part No.	Description	No. Req'd.
1	66	Ass'y. Deck 42" Mower	1	45	6713	Support — Mounting Plate	1
2	4299	housing — Spindle	3	46	6714	Bushing	1
3	4566	Fitting — Grease	3	47	MW 4564	"E" Ring $\frac{3}{8}$ " Shaft	1
4	900063-4	Bolt — Carriage $\frac{3}{8}$ -16 x 1	18	48	4974	Rulley — Idler	1
5	915663-4	Nut — Elastic Stop $\frac{3}{8}$ -16	26	49	4567	Bearing — Ball	2
6	5875	Shaft — Spindle	3	50	936024	Snap Ring $1\frac{3}{8}$ Bore	2
7	5951	Washer — Special	3	51	1967	Spacer	1
8	1515	Bearing — Ball	3	52	908036-4	Bolt — Hex $\frac{3}{8}$ -16 x $1\frac{1}{2}$	1
9	936029	Snap Ring — $1\frac{1}{2}$ Bore	3	53	915113-6	Nut — Nylok $\frac{3}{8}$ -16	5
10	6692	Pulley — Middle Drive	1	54	6715	Ass'y. Bar — Idler Support	1
11	5877	Pulley — Right & Left	2	55	6719	Pulley — Flat Idler	1
12	2844	Washer — Special	3	56	6720	Block — Slide	2
13	908033-6	Bolt Hex — Nylok $\frac{3}{8}$ -16 x $\frac{3}{8}$	6	57	900039-4	Bolt — Carriage $\frac{5}{16}$ -18 x $1\frac{1}{4}$	3
14	3716	Cup Spindle	3	58	920008-4	Washer $\frac{5}{16}$ S.A.E.	3
15	933211	Roll Pin — $\frac{1}{4}$ x $\frac{3}{4}$	6	59	6651	Spring	1
16	6693	Blade 14"	3	60	900040-4	Bolt — Carriage $\frac{5}{16}$ -18 x $1\frac{1}{2}$	1
17	1336	Washer — Dome	3	61	6748	Slide	2
18	5240	Ass'y. Roller	3	62	6747	Angle	1
19	5241	Shaft — Roller	1	63	6721	Rod — Height Control	1
20	932017-4	Pin — Cotter $\frac{1}{8}$ x 1	2	64	6722	Grip — Handle	1
21	6694	Ass'y. Support — Mower	1	65	933505-4	Hair Pin	2
22	6699	Rod — Lift	1	66	6723	Clip — Axle	2
23	933504-4	Hair Pin	3	67	6724	Support Axle	2
24	6739	Stud — Lift	1	68	900066-4	Bolt — Carriage	2
25	6702	Bracket Deck R. H.	1	69	900064-4	Bolt — Carriage $\frac{3}{8}$ -16 x $1\frac{1}{4}$	2
26	6703	Bracket Deck L. H.	1	70	6725	Arm — Pivot	2
27	2138	Spacer	2	71	4736	"E" Ring $\frac{5}{8}$ Shaft	2
28	908034-4	Bolt — Hex $\frac{3}{8}$ -16 x 1	5	72	MW-10391	Spring	1
29	920009-4	Washer $\frac{3}{8}$ S.A.E.	6	73	6726	Cover	1
30	6705	Leveler	1	74	5924	Nut — Elastic Stop #10-32	10
31	915662-4	Nut — Elastic Stop $\frac{5}{16}$ -18	6	75	6727	Ass'y. Cam Arm	1
32	6701	Quadrant	1	76	6730	Ass'y. Cam Lever	1
33	6706	Ass'y. Gage Wheel Support	1	77	6733	Ass'y. Idler Support	1
34	4570	Decal — Caution	2	78	6736	Nut — Special	1
35	5701	"E" Ring $\frac{1}{2}$ " Shaft	4	79	920039-4	Washer $\frac{3}{8}$ U. S.	1
36	4480	Wheel	2	80	920083-4	Lockwasher $\frac{3}{8}$	1
37	5188	Bolt — Shoulder	2	81	6740	Pulley — Idler	1
38	915236-6	Nut — Jam $\frac{3}{8}$ -16	2	82	6737	"V" Belt	1
39	933188	Roll Pin — $\frac{3}{16}$ Dia. x 1	2	83	6738	"V" Belt	1
40	920011-4	Washer $\frac{1}{2}$ S.A.E.	2	84	4580	Decal — Belt Installation	1
41	6710	Ass'y. Latch & Shaft	1	85	4410	Decal — Emblem	1
42	6704	Pin	1	86	1508	Bearing Needle	3
43	6712	Plate R.H. Mounting	1	87	1303	Seal — Oil	3
44	4497	Plate L.H. Mounting	1				



---

Wheel Horse Service Bulletins 1961 - 1990: **#75** Issued: June 1966

## **Rotary Mowers - Improper Mower Installation**

[Previous](#)   [Table of Contents](#)   [Next](#)

---

We have received reports of problems which are usually the result of improper mower installation. The following possibilities should be checked.

RL-366 - Proper installation and location of quick hitch assembly. Improper installation will permit interference between the right front tire and the #6908 pulley.

RL-426 - #4974 idler pulley should be installed in lower hole of #6712 right hand mounting plate for proper belt alignment.

RL-486 - Install #4974 idler pulley in lower hole of 6712 right hand mounting plate if belt size will allow. On those units on which the pulley is in the upper hole, additional belt adjustment can be obtained when needed by moving pulley to lower hole.

CAUTION: Use PT-6 power take-off units only with the above units.

---

Wheel Horse Service Bulletins 1961 - 1990: **#94** Issued: March 1968  
**42" & 48" Rotary Mowers - Models RL426, RL486, 5-1421, 5-1481**

[Previous](#)   [Table of Contents](#)   [Next](#)

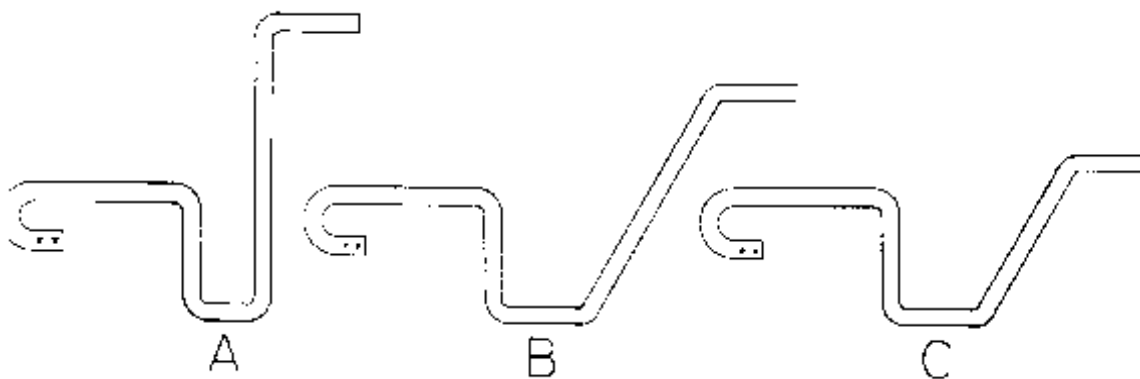
---

### Mower Installation & Removal

To facilitate the installation and removal of the 42" & 48" mowers we suggest that the cam arm assembly #6727 be installed on the foot rest support with the shaft pointing outward. Installation of the cam arm in this position allows the mower to be removed and installed without disturbing the foot rest as used on the Charger and Raider models.

### Height Control

Since the introduction of the RL series mowers, three (3) different height control rods have been used as shown in the accompanying sketch. The early rod (type A) may interfere with the tractor foot rest on late model (Charger & Raider) tractors. The type A rod (6721) may be modified to the type B configuration which will provide additional clearance. If desired, for more convenience, the latest type C rod #7677 may be installed.



---

Wheel Horse Service Bulletins 1961 - 1990: **#221b** Issued: March 1984  
**Mower Spindle Service Information 1972 and Prior 42 & 48" Mowers**

[Previous](#)   [Table of Contents](#)   [Next](#)

---

THIS BULLETIN SUPERSEDES BULLETIN 221A, ISSUED APRIL 1981

**To All Dealers:**

1. Subject

1.1 The following information is supplied to assist you in identifying available service parts.

NOTE - All mowers using the spindles listed below can be converted to the latest greaseable type refer to Service Bulletin 207A.

2. Service Action

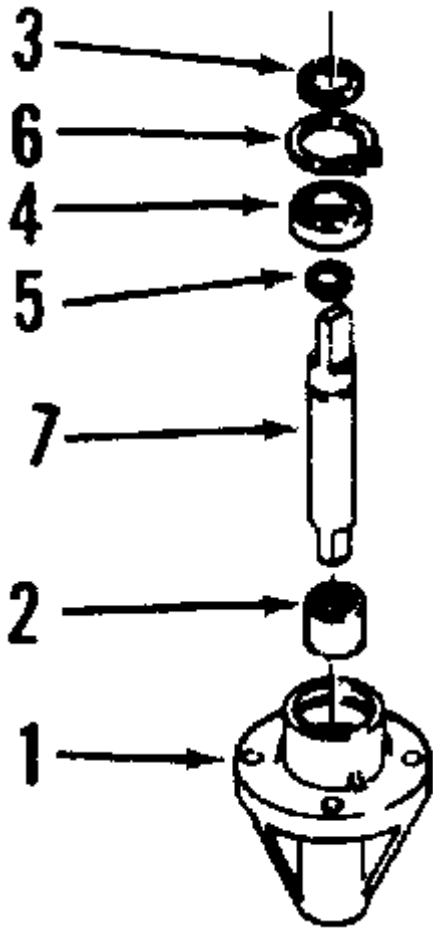
2.1 Spindle Housing #4299 or 8139 (No longer available).

2.1.1 Mowers RM-483, RM-484, RM-485, 5-5481 - Order the parts for S/A 101685 Spindle listed in Par. 2.2 below. Also order a 106848 (Double Groove) or a #106849 (Single Groove) Double "D" pulley, as needed, plus a #11Q242 bolt and #2844 washer, for each spindle being serviced.

2.1.2 Mowers RM-425, RL-426, RL-486, 5-0481, 5-1000, 5-1001, 5-1200 5-1421, 5-1422, 5-1423, 5-1481, 5-1482, 5-1483 - Order the parts for S/A 101685 Spindle listed in Par. 2.2 below.

2.2 S/A 101685 Spindle Assembly (Replaced 101550 Spindle Assembly) No longer available assembled.

2.2.1 Make up the spindle assembly using component parts:



Ref. No.	Part No.	Description
1	102775	Housing
2	100289	Needle Bearing
3	105819	Thrust Washer
4	101411	Ball Bearing
5	104822	Snap Ring (Shaft)
6	936029	Snap Ring (Housing)
7	104982	Shaft

2.2.2 When building a complete assembly from parts, fill housing with 1-1/2 ounces of #2 multi-purpose lithium base grease.

\* Bulletin is Greatly Revised to Update Information \*

2.3 Spindle Shaft #4393 (No longer available), RM-483 Mower.

2.3.1 Use S/A 109094, which contains:

Qty.	Part No.	Description
1	5217	Spindle Shaft
1	1005	Sq. Key 3/16 x 1
1	110242	Eslok Bolt 3/8-16 x 7/8 Special



1            2844            Special Washer

2.4 Spindle Shaft #5875 (No longer available) - Mowers RM-425, RL-426, RL-486, 5-0481, 5-1000, 5-1001, 5-1200, 5-1421, 5-1422, 5-1423, 5-1481, 5-1482, 5-1483.

2.4.1 S/A 101686 replaces #5875 shaft. Part Numbers and assembly follow:

<u>Qty.</u>	<u>Part No.</u>	<u>Description</u>
1	104982	Shaft
1	104822	Snap Ring (Below Ball Bearing, in snap ring groove)
1	105819	Washer (Between Pulley & Ball Bearing)